

## IFLOW HYDRONIC FURNACES

[www.iflowhvac.com](http://www.iflowhvac.com)

### INDEX

HYDRONIC FURNACES .....	2-2
SPECIFICATIONS.....	2-2
ACCESSORIES .....	2-3

*For additional technical data please visit vendor website.  
For pricing and availability please contact your ECCO Supply™ Sales Representative.*

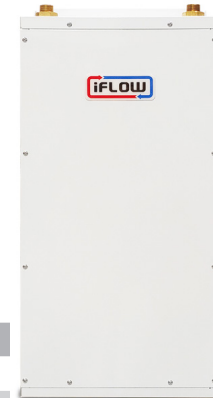
**Expert Service. Quality Products. Since 1960.**

# IFLOW HYDRONIC FURNACES

www.iflowhvac.com

## HYDRONIC FURNACES

- Highest industry performance at 98% thermal performance factor (TPF / CSA P. 9-11).
- Ultra efficient heat exchanger design.
- Full modulation capabilities to suit space load requirements extending system run time to eliminate short cycling to improve efficiency.
- Variable speed ECM blower motor provides control of air flow that can be adjusted to suit space load requirements and duct system.
- Intelligent pump modulation provides control of water flow that can be adjusted to suit space load requirements



ITEM #	MODEL	DESCRIPTION
<b>Standard Models</b>		
884701	IFLH-14000B	14"/65MBH/2T/1-Zone/NoWiFi/Base
884703	IFLH-16000B	16"/80MBH/3T/1-Zone/NoWiFi/Base
884706	IFLH-18000B	18"/95MBH/3.5T/1-Zone/NoWiFi/Base
<b>Wi-Fi Models</b>		
884702	IFLH-14000W	14"/65MBH/2T/1-Zone/WiFi
884704	IFLH-16000W	16"/80MBH/3T/1-Zone/WiFi
884707	IFLH-18000W	18"/95MBH/3.5T/1-Zone/WiFi
<b>Zoning Models (Wi-Fi)</b>		
884705	IFLH-16000D	16"/80MBH/3T/2-Zone/WiFi
884708	IFLH-18000D	18"/95MBH/3.5T/2-Zone/WiFi
884709	IFLH-18000Q	18"/95MBH/3.5T/4-Zone/WiFi

## SPECIFICATIONS

Description		iFLH-140000	iFLH-160000	iFLH-180000
Heating Capacity @ Entering Water Temperature	120 °F	27,834 BTUH	34,211 BTUH	42,376 BTUH
	130 °F	33,478 BTUH	41,357 BTUH	50,966 BTUH
	140 °F	37,729 BTUH	48,379 BTUH	59,632 BTUH
	150 °F	44,998 BTUH	55,485 BTUH	68,334 BTUH
	160 °F	50,869 BTUH	62,632 BTUH	77,065 BTUH
	170 °F	56,941 BTUH	69,769 BTUH	85,648 BTUH
	180 °F	62,786 BTUH	76,982 BTUH	94,633 BTUH
Flow Rating	LPM / GPM	11.4 / 3	11 / 2.9	10.6 / 2.8
Return Air Temp.	°C / °F	22 / 72	22 / 72	22 / 72
E. S. P.	inWC	0.6 / 1.2	0.6 / 1.5	0.6
Airflow	SCFM	941 / 824	1,222 / 1,009	1,423
Cooling Capacity	Ton	1 – 2	1.5 – 3	2 – 4
Voltage	ACV / Hz / Ph	AC 120V 60Hz 1Ph	AC 120V 60Hz 1Ph	AC 120V 60Hz 1Ph
Motor	HP	1 / 2		3 / 4
	Type	ECM Eon		
	W	431 / 393	519 / 516	592
Piping Connection	Supply	Outside Diameter : 3/4" Male NPT / Inner Diameter : 1/2" Sweat		
	Return	Outside Diameter : 3/4" Male NPT / Inner Diameter : 1/2" Sweat		
Hydronic Heating Coil		Aluminum Ultra-Efficient Fins, Copper Tubing		

– E.&O.E. – All Prices F.O.B. Our Warehouse – Subject to Change Without Notice – All Taxes Extra – May not be Available at All Branches –

## IFLOW HYDRONIC FURNACES

www.iflowhvac.com

### ACCESSORIES

ITEM #	MODEL	DESCRIPTION
884801	60EPKPOA	EZZE Plumbing Kit (PEX & Cu) (includes: tankless isolation valve set (H&C) with pressure relief valve, thermostatic mixing valve, low lead brass inlet connection to iFLOW with air vent, outlet connection with OEM Grundfos UPS15-58RU Composite Circulator (Potable) and 2 x 3/4" Brass Unions with check valve, PEX adapters, Cu adapters)
884802	60G1558B	OEM Grundfos UPS15-58RU Composite Circulator (Potable) & 2 x 3/4" Brass Unions with Sweat Connections with Check Valve
884803	2000D06B	6" Round Zone Damper Kit
884804	2000D07B	7" Round Zone Damper Kit
884805	2000D08B	8" Round Zone Damper Kit
884806	200D0808	8" x 8" Zone Damper Kit
884807	200D0810	8" x 10" Zone Damper Kit
884808	200D0812	8" x 12" Zone Damper Kit
884809	200D0814	8" x 14" Zone Damper Kit
884810	200D0816	8" x 16" Zone Damper Kit
884811	200D0820	8" x 20" Zone Damper Kit
884812	200D0824	8" x 24" Zone Damper Kit
<b>Note:</b> Zone Damper Kit includes the damper, an integrated 3-wire actuator (power open, power close, common) and a temperature sensor.		
884813	16STD01B	Universal AHU/Boiler Stand
884814	30NWCC05	Navien Communication Cable 16.5 ft. (5m)
884815	30NWCC10	Navien Communication Cable 33 ft. (10m)
C884800	30WFA00A	WiFi Module (For replacement only – included with Wi-Fi & Zoning Models)
C884800	30OTS01A	Outdoor Temperature Sensor (For replacement only – included with Wi-Fi & Zoning Models)