

## TORIN GENERAL PURPOSE BLOWERS

[www.airdexp.com](http://www.airdexp.com)

### INDEX

#### BLOWERS — GENERAL PURPOSE

ACCESSORIES .....	12-2
AMU SERIES .....	12-2
PERFORMANCE DATA .....	12-2
SPECIFICATION CHARTS .....	12-3 – 12-4

*Expert Service. Quality Products. Since 1960.*

# TORIN GENERAL PURPOSE BLOWERS

[www.airdexp.com](http://www.airdexp.com)

## BLOWERS — GENERAL PURPOSE

### AMU SERIES

Designed for use as Air Replacement and Air Make-up Units, for permanent installation.

To exhaust foul air and replace with fresh outside air.

Welded steel housing construction, finished in grey enamel.

#### Features

- 115 Volt, 60 Hz
- Thermal overload protection
- Conduit wiring box
- Permanently lubricated bearings
- Horizontal or vertical operation
- Counter clockwise rotation drive side
- AMU 245, 400, 525, 625, 845 and 1100 supplied with inlet collars
- Sleeve bearings with oilers
- 4 discharge positions



ITEM #	MODEL	CFM
810601	AMU-75	75
810602	AMU-130	130
810603	AMU-245	245
810604	AMU-400	400
810605	AMU-525	525
810606	AMU-625	625
810607	AMU-845	845
810608	AMU-1100	1100

**NOTE:** AMU-160, AMU-265, and AMU-465 also available.

### ACCESSORIES

ITEM #	DESCRIPTION
810618	Square to Round Adapter for AMU-245
810619	Square to Round Adapter for AMU-400

### PERFORMANCE DATA

Air Delivery (CFM) at R.P.M. Specified

Description	H.P.	R.P.M.	Air Delivery (CFM) at R.P.M. Specified							
			Free Air	1/8" SP	1/4" SP	3/8" SP	1/2" SP	3/4" SP	1" SP	1 1/4" SP
AMU 75	1/60	3000	75	61	54	43	-	-	-	-
AMU 130	1/70	1550	130	107	87	30	-	-	-	-
AMU 160	1/40	1600	165	150	135	120	104	-	-	-
AMU 245	1/20	1550	245	225	210	190	162	-	-	-
AMU 265	1/20	1610	265	250	233	215	185	-	-	-
AMU 400	1/12	1550	400	380	365	340	315	200	-	-
AMU 465	1/15	1530	465	430	397	357	308	-	-	-
AMU 525	1/4	1725	525	500	480	460	420	240	120	-
AMU 625	1/4	1725	625	600	560	540	500	420	280	100
AMU 845	1/2	1725	845	825	790	760	730	650	570	425
AMU 1100	1/3	1140	1100	1050	1000	950	B60	700	-	-

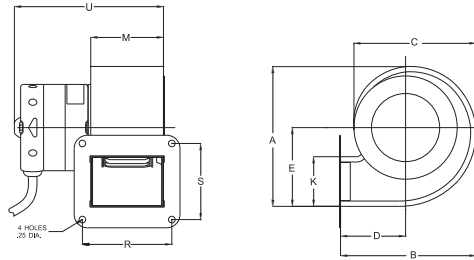
Tested by The Nozzle Chamber Method as directed in A.M.C.A. Bulletin #210. Figure #4.

# TORIN GENERAL PURPOSE BLOWERS

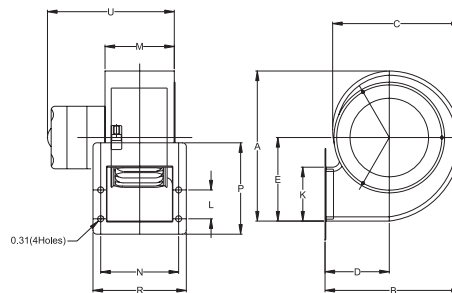
[www.airdexcorp.com](http://www.airdexcorp.com)

## BLOWERS — GENERAL PURPOSE (cont'd)

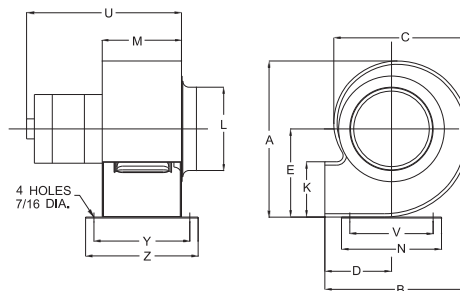
### SPECIFICATION CHARTS



Description	A	B	C	D	E	K	M	R	S	U	Weight (lbs)
AMU 75	5.34	5.17	4.68	2.50	3.02	1.92	2.75	3.38	2.88	5.35	3.4
AMU 130	7.59	7.09	6.58	3.31	4.30	2.72	3.75	4.69	3.75	6.75	4



Description	A	B	C	D	E	K	L	M	N	P	R	U	Weight (lbs)
AMU 160	7.80	7.08	6.69	3.34	4.34	2.80	1.50	3.60	4.05	4.75	4.85	6.40	5.4



Description	A	B	C	D	E	K	L	M	N	U	V	Y	Z	Weight (lbs)
AMU 245	9.41	8.73	8.17	4.0	5.33	3.36	5.0	4.75	6.0	9.0	5.0	5.75	6.75	8
AMU 400	10.61	9.76	9.24	4.44	6.01	3.79	6.0	5.25	6.0	10.75	5.0	6.25	7.25	13

(cont'd on next page)

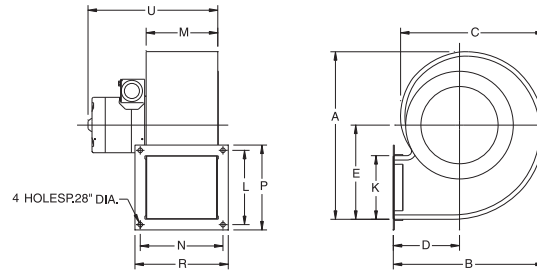
- E.&amp;O.E. - All Prices F.O.B. Our Warehouse - Subject to Change Without Notice - All Taxes Extra - May not be Available at All Branches -

# TORIN GENERAL PURPOSE BLOWERS

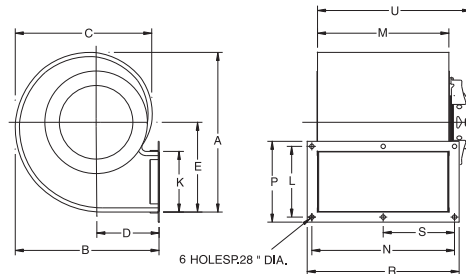
[www.airdexcorp.com](http://www.airdexcorp.com)

## BLOWERS — GENERAL PURPOSE (cont'd)

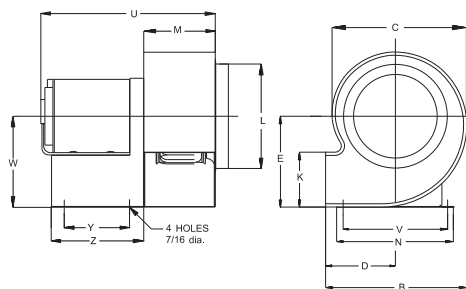
### SPECIFICATION CHARTS



Description	A	B	C	D	E	K	L	M	N	P	R	S	U	Weight (lbs)
AMU 265	9.93	9.0	8.46	3.9	5.55	3.75	4.37	4.22	4.87	5.0	5.5	-	7.65	8.05



Description	A	B	C	D	E	K	L	M	N	P	R	S	U	Weight (lbs)
AMU 465	9.93	9.0	8.46	3.9	5.55	3.75	4.37	8.12	8.82	5.0	9.4	4.41	9.46	11.0



Description	A	B	C	D	E	K	L	M	N	U	V	W	Y	Z	Weight (lbs)
AMU 525	11.91	10.85	10.36	4.88	6.98	4.24	8.0	5.5	9.0	13.6	8.0	7.23	5.0	7.02	24
AMU 625	11.91	10.85	10.36	4.88	6.98	4.24	8.0	6.0	9.0	14.1	8.0	7.23	5.0	7.02	24
AMU 845	13.43	12.19	11.66	5.44	7.60	4.76	8.0	6.0	9.0	14.8	8.0	7.85	5.0	7.02	30
AMU 1100	16.58	14.62	14.06	6.34	9.51	6.28	9.0	7.0	9.0	16.6	8.0	9.81	5.0	7.02	53

- E.&O.E. - All Prices F.O.B. Our Warehouse - Subject to Change Without Notice - All Taxes Extra - May not be Available at All Branches -