

THERMO MANUFACTURING

www.thermopan.com

INDEX

BUTTON-LOK — HANGER STRAP	14-2
SNAP CLAMPS	14-3
SNAP-GRILLES	14-3
THERMO-FRAMES RETURN AIR GRILLE FRAMES — 6" HEIGHT.....	14-3
THERMO-HEADERS JOIST HEADERS	14-2
THERMO-LEVELERS	14-4
THERMO-PAN™ RETURN AIR PANNING.....	14-2
THERMO-STAT RUFF PLATE.....	14-4
THERMO-THIMBLE THROUGH-THE-WALL LINE SET KIT.....	14-5

Expert Service. Quality Products. Since 1960.

THERMO MANUFACTURING

www.thermopan.com

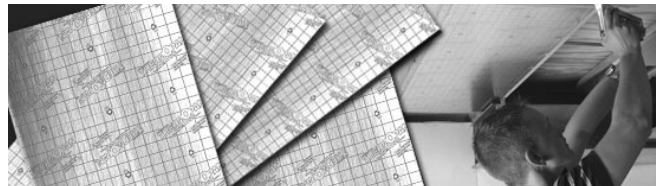
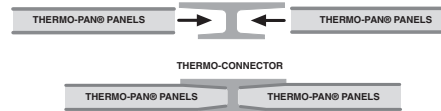
THERMO-PAN™ RETURN AIR PANNING

THERMO-PAN® is a high quality, sheet metal alternative for constructing return air ducts between joists and stud cavities. Consists of corrugated insulation faced with aluminum. Significantly reduces duct noises and labour.

- No shop fabrication; user friendly, no cut hands
- No “oilcanning” or duct noises to generate contractor callback
- Air space in the corrugated medium provides positive R-value
- Stapling as directed results in a plenum air seal tighter than sheet metal
- Enviro-friendly – made from recycled products
- Moisture treated against dampness
- Will not sustain combustion (ASTM E84-91a: Flame Spread 35/Smoke Developed Index 25)
- No duct noise
- Satisfied homeowners
- Excellent for open web trusses
- Lightweight
- Easy to install
- Four (4) precision pre-cut header sizes available

THERMO-PAN® PANNING CONNECTORS

Thermo-Connectors are molded plastic strips available in all sizes which easily connect THERMO-PAN® panels.



ITEM #	MODEL	DESCRIPTION	SIZE (")	PCS/BOX
683412	16048	Thermo-Pan	16 × 47.5	25
683414	19048	Thermo-Pan	19.5 × 47.5	25
683416	24048	Thermo-Pan	24 × 47.5	25
683410	16050	Fire-Resistant Thermo-Pan	16 × 47.5	25

THERMO-HEADERS JOIST HEADERS

ITEM #	MODEL	DESCRIPTION	SIZE (")	PCS/BOX
683406	10613	Fire-resistant – standard	16 × 12	250
683407	10618	Fire-resistant – I-joist	16 × 17	250



BUTTON-LOK — HANGER STRAP

- Cuts hanger and labour costs by one half
- Button holes easily adjust duct up or down for professional installation
- Eliminates transfer of heat loss and noise from duct system
- Made from grey high density polyethylene
- Easily cut with sheet metal snips



ITEM #	MODEL	DESCRIPTION	SIZE	PCS/BOX
683425	10100	1" Button-Lok	1" × 100'	25

– E.&O.E. – All Prices F.O.B. Our Warehouse – Subject to Change Without Notice – All Taxes Extra – May not be Available at All Branches –

THERMO MANUFACTURING

www.thermopan.com

SNAP CLAMPS

Thermo-Snap Clamps are a low-cost solution to all your pipe mounting jobs. Pre-mounted brackets provide an easy one man installation job that is literally a snap.

- Multi-use applications including copper, PVC and ABS pipes
- UV protected
- Maintenance free – use indoors or out
- Eliminates vibration and noise call backs
- Easy to re-open for an addition or custom adjustments



ITEM #	MODEL	DESCRIPTION	PCS/BOX
683430	41118	Residential 1-1/2" OD	500
683431	41125	Commercial 2" OD	250

THERMO-FRAMES RETURN AIR GRILLE FRAMES

6" HEIGHT

Two custom sizes of precision molded frames.

STANDARD – Allows unfiltered air flow

- Precision molded polypropylene
- Safety edged, all sides and ends
- Double frames can be cut for use as a single
- Place grille over frame and screw into precision molded frame holes on finished drywall

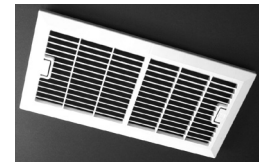


ITEM #	MODEL	DESCRIPTION	SIZE (")	PCS/BOX
683401	14620	Standard	24 × 6	50
683402	14630	Standard	30 × 6 (1) or 14 × 6 (2)	50

SNAP-GRILLES

These sturdy precision-molded white ABS grilles are designed for use with standard 1/2" or 5/8" drywall. They snap-fit perfectly into the Thermo-Frames™ – whether used as a single (14" × 6") or as a double (30" × 6") placed side-by-side.

- Mates perfectly with 30" × 6" or 14" × 6" Frames
- No tools or screws required – simply snap into place
- Just depress tabs for easy removal and cleaning
- Save time, labour and money
- Paint to match any decor
- No rusting, no chipped metal to touch up
- Pre-marked for screws if used with other brand frames



ITEM #	MODEL	SIZE (")	PCS/BOX
683405	15146	15-7/8 × 7-7/8	40

– E.&O.E. – All Prices F.O.B. Our Warehouse – Subject to Change Without Notice – All Taxes Extra – May not be Available at All Branches –

THERMO MANUFACTURING

www.thermopan.com

THERMO-STAT RUFF PLATE

- Provides an air-tight seal around wire for accurate temperature control
- 6" × 6" size fits most all makes and models of thermostats
- Residential and commercial application
- For wood or metal studs
- Provides back-up support for sub-base screws
- Keeps wire in the middle of stud
- Easy right or left hand stud mounting



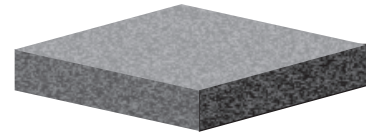
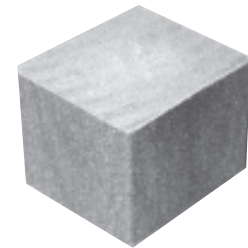
ITEM #	MODEL	SIZE (")	PCS/BOX
683420	56000	6 × 6	100

THERMO-LEVELERS

Leveler Blocks

Better than bricks! Level furnaces, electric heaters, air conditioners, or any other types of home or industrial equipment.

- Tested crushing strength: 5,000 lbs per block
- Lightweight
- Water and insect resistant
- Made from recycled wood composite that won't chip, crack, split, or rot
- Raises furnace off floor for easier cleaning
- Stops moisture and equipment rusting
- Won't conduct cold



Vibration Blocks

- Perfect for residential, commercial and industrial use
- Shim furnaces and condenser units – vibration-free
- Made from PURE polymer that won't chip, crack, split, or rot
- Softer than Leveler Blocks

ITEM #	MODEL	DESCRIPTION	SIZE (")	PCS/BOX
683432	17525	Twist Blocks	1-3/4 × 2 × 2-1/4 – 4/pkg	25
683434	19525	Vibration Pads	3/4 × 3 × 3 – 4/pkg	25

THERMO MANUFACTURING

www.thermopan.com

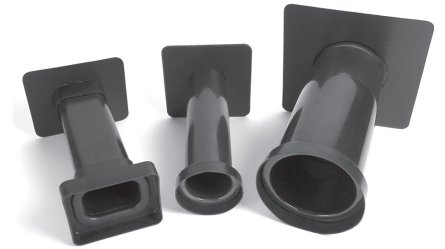
THERMO-THIMBLE THROUGH-THE-WALL LINE SET KIT

ThermoThimble is innovative...

- Stops line set snagging
- Creates a permanent, air-tight seal through walls
- High-density foam gaskets keep out air, insects, and other pests
- No ugly holes to patch

ThermoThimble is easy to install ...

- Installs easily on siding or masonry walls
- Saves labour costs
- Unit offers custom, professional look
- For new construction or retrofit, residential and commercial



ITEM #	MODEL	DESCRIPTION	SIZE	PCS/BOX
KITS BELOW INCLUDE ROUND TUBE AND FLANGE				
683446	44002	Thimble Kit (Round)	2-7/8" diameter – up to 12" wall	40
683448	44005	Thimble Kit (Round)	4-7/8" diameter – up to 12" wall	16
KITS BELOW INCLUDE RECTANGULAR TUBE AND FLANGE				
683436	44008	Thimble Kit (Rectangular)	2-1/4" x 3-1/8" – up to 8" wall	20