

THE BLUE DUCT™
www.blueduct.com

INDEX

90° BOOT.....	14-3
90° ELBOW	14-2
AIR TEST KITS (MANOMETER, FILL KIT WITH VALVE, SCREWS).....	14-5
AIRTITE SEALANT	14-6
ALIGNMENT STRAPS.....	14-6
BLUE DUCT FLANGED ALIGNMENT PINS	14-6
BOLTS FOR FLANGED CONNECTIONS (BAG)	14-6
BOOT EXTENSION — 16".....	14-3
BOOTS	
INLINE	14-3
OFFSET CENTER SADDLE WITH SCREWS.....	14-4
OFFSET FOOTER	14-6
OFFSET SADDLE WITH SCREWS.....	14-3
CLAMP AND GASKET SETS.....	14-5
DAMPER	14-6
DRILLING JIG.....	14-6
END CAPS.....	14-3
FLANGE CUTTER AND SAW.....	14-6
FOAM TRENCH BLOCK	14-5
GASKETS.....	14-5
LINEAR DIFFUSERS.....	14-4
ADAPTER (LDA) — UNIVERSAL	14-5
PIPE.....	14-2
PLENUM	14-3
ADAPTER WITH SCREWS	14-3
REDUCERS	
BOOT	14-6
CONCENTRIC.....	14-4
ECCENTRIC.....	14-4
SADDLE.....	14-4
TEE	14-2
SCREWS.....	14-5
TEE/WYE.....	14-2

May not be available at all Branches.

Expert Service. Quality Products. Since 1960.

THE BLUE DUCT™

www.blueduct.com

PIPE

ITEM #	MODEL	SIZE
715004	06-2510	6" × 8'
715006	08-2510	8" × 8'
715008	10-2510	10" × 8'
715010	12-2510	12" × 8'
715012	14-2510	14" × 8'
715014	16-2510	16" × 8'
715016	18-2510	18" × 8'
715015	20-3510F	20" × 8'
715017	24-3510F	24" × 8'
715019	30-3510F	30" × 8'
C715002	36-3510F	36" × 8'



Residential



Commercial

90° ELBOW

ITEM #	MODEL	SIZE (")
715018	06-2530	6
715020	08-2530	8
715022	10-2530	10
715024	12-2530	12
715026	14-2530	14
715028	16-2530	16
715030	18-2530	18
715029	20-3530F	20
715031	24-3530F	24
715033	30-3530F	30
C715002	36-3530F	36



Residential



Commercial

TEE/WYE

ITEM #	MODEL	DESCRIPTION	SIZE (")
715032	06-2520	Tee	6
715034	08-2520	Tee	8
715036	10-2520	Tee	10
715038	12-2520	Tee	12
C715002	14-2575	Wye	14
C715002	16-2575	Wye	16
C715002	20-3575F	Wye	20
C715002	24-3575F	Wye	24
715039	30-3575F	Wye	30
C715002	36-3575F	Wye	36



6" - 12"



20" - 36"



14" - 16"

TEE REDUCER

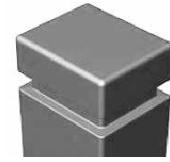
ITEM #	MODEL	SIZE (")
715040	08-2525	8 - 8 × 6



- E.&O.E. - All Prices F.O.B. Our Warehouse - Subject to Change Without Notice - All Taxes Extra - May not be Available at All Branches -

PLENUM

ITEM #	MODEL	SIZE (")
715042	20-0010	20 × 24 × 36
715044	20-0015	25 × 30 × 48


PLENUM ADAPTER WITH SCREWS

ITEM #	MODEL	SIZE (")
715046	06-2560	6
715048	08-2560	8
715050	10-2560	10
715052	12-2560	12
715054	14-2560	14
715056	16-2560	16
715058	18-2560	18


90° BOOT

ITEM #	MODEL	SIZE (")
715060	06-2502	6 - 4 × 12
715062	08-2502	8 - 4 × 12
715063	08-2503	8-3/4 × 8


BOOT EXTENSION — 16"

ITEM #	MODEL	SIZE (")
715068	20-0050	4 × 12 × 16


END CAPS

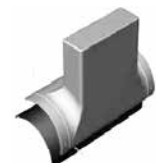
ITEM #	MODEL	SIZE (")
715072	06-2511	6
715074	08-2511	8
715076	10-2511	10
715078	12-2511	12
715080	14-2511	14
715082	16-2511	16
715084	18-2511	18
715021	24-3511F	24" with (1) End Left On


INLINE BOOTS

ITEM #	MODEL	SIZE (")
715066	10-2515	10 - 4 × 12


OFFSET SADDLE BOOT WITH SCREWS

ITEM #	MODEL	SIZE (")	FITS ON PIPE (")
715086	10-2550	10 - 4 × 12	10
715088	12-2550	12 - 4 × 12	12, 14, 16, 18
715090	12-2551	12 - 4 × 24	12, 14, 16, 18



– E.&O.E. – All Prices F.O.B. Our Warehouse – Subject to Change Without Notice – All Taxes Extra – May not be Available at All Branches –

OFFSET CENTER SADDLE BOOT WITH SCREWS

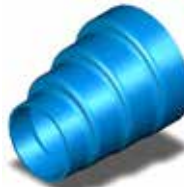
ITEM #	MODEL	SIZE (")	FITS ON PIPE (")
715092	06-2570	6 - 4 × 12	–
715094	08-2570	8 - 4 × 12	–
715096	10-2570	10 - 4 × 12	10, 12


ECCENTRIC REDUCERS

ITEM #	MODEL	SIZE (")
715098	18-2540	18 × 16 × 14 × 12
C715002	18-3541F	18 × 16
715101	20-3541F	20 × 18
C715002	20-3542F	20 × 18 × 16
715103	24-3541F	24 × 20
C715002	24-3542F	24 × 20 × 18
715105	24-3543F	24 × 20 × 18 × 16
715107	30-3542F	30 × 24
C715002	36-3541F	36 × 30
C715002	36-3543F	36 × 30 × 24



Residential



Commercial

CONCENTRIC REDUCERS

ITEM #	MODEL	SIZE (")
715100	08-2540	8 × 6
715102	10-2540	10 × 8
715104	12-2547	12 × 10 × 8 × 6
715106	16-2547	16 × 14 × 12 × 10


SADDLE REDUCERS

ITEM #	MODEL	SIZE (")	FITS ON PIPE (")
715108	10-2578	8 × 6	10, 12, 14, 16, 18, 20, 24
715110	12-2577	12 × 10	12, 14, 16, 18, 20, 24
715112	14-2577	14 × 12	14, 16, 18, 20, 24
715114	16-2577	16 × 14	16, 18, 20, 24
715116	18-2577	18 × 16	18, 20, 24
C715002	30-2577	30	30
C715002	36-2577	36	36



NOTE: For 30" and 36" use a reducer to go to a smaller size.

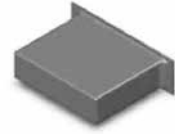
LINEAR DIFFUSERS

ITEM #	MODEL	SIZE (")	REGISTER SIZE (")
715118	20-0061	48 (49 × 7 × 8)	48 × 6
715120	20-0062	36 (37 × 7 × 8)	36 × 6
715122	20-0063	24 (25 × 7 × 8)	24 × 6



UNIVERSAL LINEAR DIFFUSER ADAPTER (LDA)

ITEM #	MODEL	SIZE (")	FITS ON LD (")
715124	20-0060	23 × 20 × 6 (O.D.)	24, 36, 48


AIR TEST KITS (MANOMETER, FILL KIT WITH VALVE, SCREWS)

ITEM #	MODEL	DESCRIPTION
715130	20-0101	Includes: manometer, valve, adapter, 8" plate

CLAMP AND GASKET SETS

ITEM #	MODEL	SIZE (")	WIDTH (")
715136	06-0080	6	5
715138	08-0080	8	5
715140	10-0080	10	5
715142	12-0081	12	6
715144	14-0081	14	6
715146	16-0081	16	6
715148	18-0081	18	6
715147	20-0081	20	6
715149	24-0081	24	6
C715002	30-0081	30	6
C715002	36-0081	36	6


SCREWS

ITEM #	MODEL	DESCRIPTION	SIZE (")	QTY
715150	20-0025	Stainless Steel Saddle Screws	1.25	25/Bag
715152	20-0026	Plenum Adapter Screws	2	25/Bag


GASKETS

ITEM #	MODEL	SIZE (")	WIDTH (")
715158	06-0090	6	5
715160	08-0090	8	5
715162	10-0090	10	5
715164	12-0090	12	6
715166	14-0090	14	6
715168	16-0090	16	6
715170	18-0090	18	6


FOAM TRENCH BLOCK

ITEM #	MODEL	SIZE (")
715134	20-0027	3 × 4 × 12
C715002	20-0028	5 × 4 × 18



OFFSET FOOTER BOOT

ITEM #	MODEL	APPLICATION	SIZE (")
715064	06-2501	Residential	6 - 3 × 14


DAMPER

ITEM #	MODEL	APPLICATION	SIZE (")
715126	20-0030	Commercial	4 × 12


BOOT REDUCER

ITEM #	MODEL	APPLICATION	SIZE (")
715070	20-0200	Commercial	4 × 12 to 2-1/4 × 12


AIRTITE SEALANT

ITEM #	MODEL
715132	20-0711


BOLTS FOR FLANGED CONNECTIONS (BAG)

ITEM #	MODEL	SIZE (")	FITS ON LD
715154	20-0024	3	Box of 5

BLUE DUCT FLANGED ALIGNMENT PINS

ITEM #	MODEL	QUANTITY
C715002	20-0151	4/box


DRILLING JIG

ITEM #	MODEL	SIZE (")
C715002	20-0131	20
C715002	24-0132	24
C715002	30-0133	30
C715002	36-0134	36


FLANGE CUTTER AND SAW

ITEM #	MODEL	DESCRIPTION
C715002	20-0141	8-1/4" Circular Saw w/Cutting Jig
C715002	20-0142	Universal Saw Fixture


ALIGNMENT STRAPS

ITEM #	MODEL	PIPE SIZE (")
C715002	20-0152	20, 24
C715002	20-0153	30, 36