

SOLER AND PALAU FANS

www.solerpalaucanada.com

INDEX

ACCESSORIES	
DRYER BOOSTER KIT ACCESSORIES AND SWITCHES.....	12-7
ELECTRONIC	12-9
GENERAL.....	12-8
TD.....	12-7
TH	12-7
WA AND DA	12-8
BLOWERS	
INLINE DUCT	12-7
CROSS REFERENCE MODELS	12-10
FANS	
CEILING AND CABINET	12-6
GRAVITY RELIEF AND INTAKE	12-4
INLINE	12-2
ROOF TOP	12-5
SPUN ALUMINUM ROOF TOP	12-4 – 12-5
TUBEAXIAL	12-3
WALL	12-2 – 12-3
VENT SETS.....	12-4

This section contains product information only.
For additional information and product pricing please contact your local ECCO Supply™ Sales Branch.

Expert Service. Quality Products. Since 1960.

SOLER AND PALAU FANS

www.solerpalaucanada.com

INLINE FANS

MODEL TD — MIXVENT SERIES

The TD-MIXVENT series of in-line duct fans have been specially designed to maximize the airflow performance with minimal noise levels within the smallest and most compact housing size. This makes the TD-MIXVENT series the ultimate solution for small to medium sized ventilation installations, which require a high airflow to pressure ratio and occupy only the minimum space possible. Example: false ceiling voids, cabinets and many other limited space environments.



MODEL TD — SILENT SERIES

As the name suggests these fans are extremely quiet, low profile "Mixed-flow" fans. Manufactured in plastic material with an external connection box, the body is easily dismantled with a two speed controllable 115V 60Hz motor. Sound waves are directed through the perforated inner skin and absorbed by a layer of sound-absorbent insulation. Plus the TD-SILENT is fitted with rubber gaskets on the inlet and outlet to absorb vibrations.



MODEL PV — POWERVENT SERIES

The POWERVENT (PV) are designed for direct connection in-line with standard diameter round ducting. This powerful combination enables the PV fans to deliver exceptional airflow performances against high static pressure typically found in ducted ventilation systems. All motors within PV fans are fully speed controllable using voltage or frequency control regulators.



MODEL SWF — SIDEWALL SERIES

When indoor space is limited, the Sidewall Fan Series (SWF) has been specially designed for an easy, low profile, exterior wall installation. The Sidewall Fan Series (SWF) of direct drive centrifugal in-line ventilation fans consists of five models ranging from 4-8". All models are designed for direct connection in-line with standard diameter round ducting. Airflow performance values range from 119 CFM up to 416 CFM.



MODELS SQB AND SQD SQUARE IN-LINE CENTRIFUGAL DUCT FANS

Models SQB and SQD Square In-line Centrifugal Duct fans are the perfect selection for clean air applications where space is a leading consideration. Model SQB fans are available in sizes 7 through 42 with airflow performance from 100 to over 24,000 CFM and static pressure capabilities to 3-1/2". Model SQD fans are available in sizes 6 through 15, moving up to 2,800 CFM with static pressure capabilities to 1".



MODEL CTB INLINE TUBULAR CENTRIFUGAL FANS

The tubular centrifugal line offers some of the widest range of sizes, horsepower and performance in the industry. Models CTB are high capacity belt driven centrifugal fans rated from 300 to 20,000 CFM, with static pressure capability up to 2-1/2".



WALL FANS

MODEL S — WALL EXHAUST SHUTTER FAN

- Available in 8" to 36" Blade Sizes
- Totally Enclosed, Ball Bearing Motor with Thermal Auto Reset
- Sturdy Well Built Motor Mount/Blade Guard
- Efficiently Designed and Balanced Axial Blades
- Quality Engineered and Powder Coated Metal Wall Housing
- Extruded Aluminum Back Draft Shutters
- Low Leakage Nylon Shutter Seals
- Optional OSHA Guards
- Completely Assembled and Ready to Install



– E.&O.E. – All Prices F.O.B. Our Warehouse – Subject to Change Without Notice – All Taxes Extra – May not be Available at All Branches –

SOLER AND PALAU FANS

www.solerpalaucanada.com

WALL FANS *(cont'd)*

MODEL WA — COMPACT WALL FAN

The COMPACT WALLAXIAL FANS feature, as the name suggests, an extremely compact design created by the combination of an external rotor motor matched with a direct drive wrapped around an impeller hub. This very low profile design optimizes airflow performance while minimizing noise generation. This fan requires an absolute minimum depth for any given wall, ceiling or panel mounted installation.



MODEL LC — SIDEWALL BELT DRIVE PROPELLER FAN

- Sizes 20 to 60
- 3,000 to 40,000 CFM
- Static Pressure to 1/2"
- AMCA Seal for Air and Sound
- High Efficiency/Low Cost



MODEL L2 — HEAVY DUTY SIDEWALL BELT DRIVE PROPELLER FAN

- Sizes 10 to 160
- 600 to 55,800 CFM
- Static Pressure to 1"
- AMCA Seal for Air and Sound
- Reversible Models Available



MODELS GED/GSD, DFE/DFS, DDE/DDS — DIRECT DRIVE SIDEWALL PROPELLER FAN

- Sizes 10 to 20
- 380 to 5,200 CFM
- Static Pressure to 1"



MODEL CWD — CENTRIFUGAL WALL MOUNTED SIDEWALL EXHAUSTER DIRECT DRIVE

- Sizes 7 to 16
- 150 to 3,360 CFM
- Static Pressure to 1"
- AMCA Seal for Air Performance
- CSA/UL Listing Available



TUBEAXIAL FANS

MODEL DA — COMPACT DUCT AXIAL FAN

The COMPACT DUCT AXIAL FANS feature, as the name suggests, an extremely compact design created by the combination of an external rotor motor matched with a direct drive wrapped around an impeller hub. This very low profile design optimizes airflow performance while minimizing noise generation. These fans require an absolute minimum depth for any in-line duct mounted installation.



MODEL TBD — TUBEAXIAL DUCT FAN

- Sizes 12 to 60
- 900 to 75,490 CFM
- Static Pressure to 1-1/2"



MODEL DDT — TUBEAXIAL DUCT FAN

- Sizes 12 to 48
- 390 to 43,000 CFM
- Static Pressure to 1-1/4"



SOLER AND PALAU FANS

www.solerpalaucanada.com

GRAVITY RELIEF AND INTAKE FANS

MODELS RCXII/RCXII-SF/BGH/RLX — GRAVITY RELIEF AND INTAKE VENTILATORS

- Sizes 8 to 36
- 163 to 10,378 CFM
- Static Pressure Rating to 3/8"



MODEL RLX — GRAVITY RELIEF AND INTAKE HOODS

- Sizes 12 × 12 to 60 × 120
- 400 to 69,500 CFM
- Static Pressure Rating to 1/4"



MODEL BGH — GRAVITY RELIEF AND INTAKE HOODS

- Sizes 12 × 12 to 72 × 144
- 500 to 90,000 CFM
- Static Pressure Rating to 1/4"



VENT SETS

MODEL CM — BELT DRIVEN VENT SETS

- Sizes 10 to 36
- 500 to 24,500 CFM
- Static Pressure to 5"
- AMCA Seal for Air and Sound
- UL Listing available



SPUN ALUMINUM ROOF TOP FANS

MODEL ARE/ARS — DOME AXIAL ROOF EXHAUST OR SUPPLY FAN

- Direct Drive Dome
- Exhaust or Supply
- Sizes 10 to 20
- 268 to 3,180 CFM
- Static Pressure to 3/4"
- UL Listing Available



MODEL TXD — UPBLAST DIRECT DRIVE CENTRIFUGAL ROOF EXHAUSTER

- Sizes 6 to 15
- 253 to 3,400 CFM
- Static Pressure to 1-1/4"
- AMCA Seal for Air and Sound
- Optional UL Listing for Restaurant Exhaust
- Wall Mount Available



MODEL TXB — UPBLAST BELT DRIVE CENTRIFUGAL ROOF EXHAUSTER

- Sizes 8 to 48
- 300 to 35,000 CFM
- Static Pressure to 3-1/4"
- AMCA Seal for Air and Sound
- Optional UL Listing for Restaurant Exhaust
- Wall Mount Available



MODEL DB — DOWNBLAST BELT DRIVE CENTRIFUGAL ROOF EXHAUSTER

- Sizes 6 to 48
- 100 to 28,600 CFM
- Static Pressure to 1-1/4"
- AMCA Seal for Air and Sound
- UL Listing Available



MODEL RED — DOWNBLAST DIRECT DRIVE CENTRIFUGAL ROOF EXHAUSTER

- Sizes 6 to 15
- 46 to 3,000 CFM
- Static Pressure to 1"
- AMCA Seal for Air and Sound CSA
- UL Listing Available



– E.&O.E. – All Prices F.O.B. Our Warehouse – Subject to Change Without Notice – All Taxes Extra – May not be Available at All Branches –

SOLER AND PALAU FANS

www.solerpalaucanada.com

SPUN ALUMINUM ROOF TOP FANS *(cont'd)*

MODEL ERED — DOWNBLAST DIRECT DRIVE CENTRIFUGAL ROOF EXHAUSTER WITH ECM

- Sizes 6 to 15
- 40 CFM to 3,000 CFM
- Static Pressure to 1-1/2" w.g.
- AMCA Seal for Air and Sound
- cULus Listing Available



MODEL LPD — LOW PROFILE DIRECT DRIVE CENTRIFUGAL ROOF EXHAUSTER

- Two Sizes
- 50 CFM to 500 CFM
- Static Pressure to 1-1/2" w.g.
- AMCA Seal for Air and Sound
- Optional UL Listing



MODEL CSF — BELT DRIVE FILTERED CENTRIFUGAL SUPPLY FAN

- Sizes 9 to 20
- 475 to 12,520 CFM
- Static Pressure to 2"
- AMCA Seal for Air and Sound
- CSA/UL Listing Available



MODEL LSF — BELT DRIVE FILTERED CENTRIFUGAL SUPPLY FAN

- Sizes 9 to 20
- 475 to 12,520 CFM
- Static Pressure to 2"
- AMCA Seal for Air and Sound
- CSA/UL Listing Available



ROOF TOP FANS

MODEL HRSB/HRSD — BELT/DIRECT DRIVE HOODED PROPELLER ROOF SUPPLY FAN

- Sizes 24 to 60
- 2,979 to 56,500 CFM
- Static Pressure to 3/4"
- AMCA Seal for Air and Sound
- Filtered and Reversible Models Available



MODEL HREBC/HRED-C — BELT/DIRECT DRIVE HOODED PROPELLER ROOF EXHAUSTER

- Sizes 24 to 60
- 1,160 to 49,000 CFM
- Static Pressure to 3/4"
- AMCA Seal for Air and Sound



MODEL KSF — BELT DRIVE CENTRIFUGAL FILTERED ROOF SUPPLY FAN

- Single Inlet
- Sizes 9 to 20
- 375 to 12,000 CFM
- Static Pressure to 2"
- UL Listing Available
- Intake Extension Available



MODEL TUB/TUB-HT — REMOTE BELT DRIVE TUBEAXIAL UPBLAST ROOF EXHAUSTER

- Sizes 24 to 60
- 6,200 to 60,116 CFM
- Static Pressure to 1"
- High Temperature for Heat and Smoke



SOLER AND PALAU FANS

www.solerpalaucanada.com

SPUN ALUMINUM ROOF TOP FANS (cont'd)

MODELS UBS, UBSRD-HT, UBSRD-HT1 — BELT DRIVE UPBLAST PROPELLER ROOF EXHAUSTER

- Sizes 24 to 60
- 4,900 to 52,000 CFM
- Static Pressure to 3/4"
- UL Listed
- High Temperature for Heat and Smoke (UBSRD-HT and UBSRD-HT1)



MODELS UBB, UBX, UBRD — BELT DRIVE UPBLAST PROPELLER ROOF EXHAUSTER

- Sizes 24 to 60
- 7,000 to 51,000 CFM
- Static Pressure to 1/2"
- UL Listed

CEILING AND CABINET FANS

MODEL FF/FFC — CEILING AND INLINE/CABINET VENTILATORS

- Sizes 50 to 2000
- 50 to 2000 CFM
- Static Pressure to 1"
- AMCA Seal for Air and Sound
- UL Listing available



MODEL PC — PREMIUM CHOICE SERIES BATHROOM FANS

- Extremely quiet operation <0.3 to 1.1 Sones
- 80-150 CFM
- Aerodynamically engineered to move air with lowest power consumption and sound levels
- Motors operate with the lowest heat buildup for long life even when run continuously
- PC80 to 150 feature 6" ducting for peak air movement at lower noise levels
- PC50 features 4" ducting
- Low air leakage dampers minimize uncontrolled infiltration
- Robust steel housing
- Internal electrical wiring box
- Attractive, sturdy grille
- Thermally protected motor
- ETL Listed
- ENERGY STAR® qualified and HVI Certified



MODEL PCD110M — PREMIUM CHOICE SERIES BATHROOM FANS WITH DC MOTOR

- Extremely quiet operation 0.5 sones
- Aerodynamically engineered to move air with lowest power consumption and sound levels
- Brushless DC motor for long life – rated for 60,000 hours continuous "on"
- Built-in motion sensor
- LED Night Light
- High/Low speed delay timer
- 4" and 6" duct connectors included
- Built-in backdraft damper
- Robust steel housing
- Attractive, sturdy grille
- ETL Listed
- ENERGY STAR® qualified and HVI Certified



SOLER AND PALAU FANS

www.solerpalaucanada.com

INLINE DUCT BLOWERS

MODEL CFD — FORWARD CURVED DUCT BLOWER

- Computer designed, efficient performance, forward curved blower
- Blower wheel hub is secured to the shaft with a locking keyway
- Blower penetrates the cabinet with a neoprene tight seal
- Durable galvanized plating is used on both the blower and cabinet
- Reinforced horizontal hanging rod connections
- Heavy duty ball bearings are suitable for -65°F to +250°F temperatures
- Robust access panels are ribbed for rigidity and have handles for ease of removal when installing or servicing motor and drive on either side
- All models have machine keyed shafts on both ends for CW or CCW drive
- Models CFD07 to CFD15 can be used in both horizontal and vertical air flow positions (CVTT is used for next size)



MODEL CVTT — FORWARD CURVED DUCT BLOWER

- Computer designed, efficient performance, forward curved blower
- Blower wheel hub is secured to the shaft with a locking keyway
- Blower is secured to anti-vibration mounts within the cabinet
- Blower outlet is connected to a flexible duct connection within the cabinet to aide in anti-vibration
- Insulated with high grade Melamine acoustic sheet
- Durable galvanized plating is used on both the blower and cabinet
- Cabinet corners are robust cast aluminum blocks
- Both side access panels are secured with pressure locks that open quickly and easily with the push and turn of an Allen key
- Heavy duty ball bearings are suitable for -65°F to +250°F temperatures
- All models have machine keyed shafts on both ends for CW or CCW drive



ACCESSORIES

DRYER BOOSTER KIT ACCESSORIES AND SWITCHES



SPT-100x – Pressure Switch with Tubing and Probe



CS-325 – High Current Sensor



LT-100 – Lint Trap

TD ACCESSORIES



MBR – TD Circular Fan/Duct Connectors



MAR – TD Fan Circular to Rectangular Flange

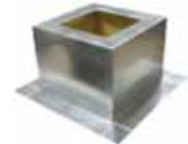


MRJ – Mesh Type Grilles



MCA – TD Twin Direct Connection Backdraft Shutters

TH ACCESSORIES



TH-CURB – TH Roof Curb

– E.&O.E. – All Prices F.O.B. Our Warehouse – Subject to Change Without Notice – All Taxes Extra – May not be Available at All Branches –

SOLER AND PALAU FANS

www.solerpalaucanada.com

ACCESSORIES (cont'd)

WA AND DA ACCESSORIES



PIE – Support/
Mounting Feet



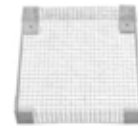
ACOP – Flexible
Flange Connector



BRIDA – Round Duct
Matching Flange



DEF-T – Wire
Protection Guard



DEF-D – Wire Guard

GENERAL ACCESSORIES



PG/PGD-Plastic Grille w/
Steel Collar (w/ or w/o
backdraft damper)



BOC – Metal/Plastic
Adjustable Round
Grilles



GRA – Aluminum
Exterior Fixed Grilles



GR – Plastic Exterior
Fixed Grilles



PER-CN – Aluminum
Louvered Shutters



PER-W – Plastic
Louvered Shutters



SIL – Inline Duct
Silencers



CAR – Backdraft
Dampers



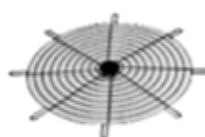
MFL – Filter Boxes



ACOP-V – Vent
Mounting Clamps



ME – Round
Adjustable Metal
Elbow



IG – Inlet Guard for
PV



SY – Sheet Metal
Adapter



SR – Incraser/
Reducer



TW – Nylon Tie
Wrap



RC – Roof Cap



ID – Flexible
Insulated Round
Duct

– E.&O.E. – All Prices F.O.B. Our Warehouse – Subject to Change Without Notice – All Taxes Extra – May not be Available at All Branches –

ACCESSORIES (cont'd)

ELECTRONIC ACCESSORIES



SCS5 – Speed Control



EPBT-60 – Electronic Push Button Timer



SC – Speed Control



SCR – Speed Control



FLTD-60 – Fan/light Delay Timer Switch



SRT-30 – Rotary Spring Wound Timer



SHW-20 – Wall Mounted Dehumidistat



CVC – Continuous Ventilation Control

SOLER AND PALAU FANS

www.solerpalaucanada.com

CROSS REFERENCE MODELS *(Models are for general similarity only.)*

S&P	Description	Coolair	Cook	Twin City	Penn	Acme	Carnes	Green-heck	Fantech	Canarm/Delhi	
DB	R/T Down Blast Exhaust Centrif. BD	CRBCA	ACEB	BCDR	DXB/KB/JB/MB	PV/PNN	VEBK	GB	BDD/ABE	BDCR/CBR	
LPD & RED	R/T Down Blast Exhaust Centrif. DD	CRDA	ACED	DCRD	DX	PRN	VEDK	G	REC/DDD	DR-H/300/CDR	
TXB	R/T Up Blast Exhaust Centrif. BD	UBCA	ACRUB	BCRU	FXB/FMX	PNU/PU	VUBK	CUBE	BDU	CDU / CBU	
TXB UL762	R/T Up Blast Exhaust Centrif. BD	CUBA	VCR	BCRUR	FXBFT/FMBFT	PNU-RG	VRBK	CUBE	BDU	BDU/CBUHP	
TXD	R/T Up Blast Exhaust Centrif. DD	UDCA	ACRUD	DCRU/ R	FX/FMX	PDU	VUDK	CUE	DDU	DU-H / CDU	
CWD	Sidewall Exhaust Centrif. DD	CWDA	ACWD	TCWX	WX/WA/WB	PW	VWDK	GW	--	--	
FF/FFC	Ceiling Cabinet fans	DD	CF/CFL	GC-GN	T/TL	ZEPHER-Z	VVQ/VQL	VCDD	SP/CSP	CEV/IEV	--
KSF	R/T Filtered fresh air supply fan	DD	CFS/SIS	KSPB	BCFS	MU/FS	AFSI	VSBB	KSU/RSF	FSU	SIS / SBAR
ARE / ARS	R/T Dome Exhaust/Supply Axial. DD	SASD/SAED	AQD	--	DAE	LQ	LEDA	AIS	ADE /ADS	--	
S	Direct drive shutter fan	DD	CDP/WS	--	--	P	--	--	SHE	SD/ AX/ S	
GED / GSD	Sidewall Exhaust/Supply Prop. DD	CDC	APD	TCPE	P	FQ/FN	LTDK/LZDK	SE1/SS1	VLD	P	
LCE / LCS	Sidewall Exhaust/Supply Prop. BD	CAB/CBL	XLM/SWB	WPMD	BLL/BFM/BBK	DC/DCK	LWBA/LWBK	SBE/S 1&2	SDE	DDS / ADD	
L2E / L2S	HD Sidewall Exhaust/Supply Prop. BD	CAL	XL/XM/AWB/HWB	TCWPX *	BFM/BFH/BCH	DCK/DCH	LABA	SBE/SBC	MDE	XB / HV	
SQB	Square Inline Duct Fan Centrif. BD	SQBA	SQNB -B/ SQI-B	BSI	SXB	XB	VIBK	BSQ	--	DSQ-B	
SQD	Square Inline Duct Fan Centrif. DD	SQDA	SQND -D/ SQI-D	DSI	SX	XD	VIDK	SQ	FSD	DSQ-D	
UBS	R/T Upblast Exhaust Propeller	DB	J/JT	LXU/LEU/LSU	LPRVX	HS/HZ	UBG	LUBA	PUB/RBU	BLT	RB
HREB-C	R/T Hooded Exhaust Propeller	BD	PEB	HXE/HEE	LPHD/B	AF/AC	EC/ECH	LTBA	RBE/RBCE	RHE	PRE
UBSRD-HT	R/T Upblast Exh. H. Temp Prop. BD	HS	SUBH	UBT/TUB	HX	UBH-UF	LQBA	TAUB-HT	--	RTA	
HRSB	R/T Hooded Supply Propeller	BD	PSB	HXS/HES	HVWP	AF/AC	EC-S/ ECH-S	LGBA	RBS/RBCS	RHS	PRI
TDB / DDT	Tube Axial fans	BD/DD	TBC/TEBC	EDB/EDD	TB/TD	BTA/TA	HA / HDD	LIBA/LIDA	TAB/TAD	BTA/DDA	
CM	Vent Sets/ BI / cUL705 & 762 & 793	BD	VSBC	CPV/S	BCV/J	D/ RPK	QBR	--	SWB	--	BI/BI-RM
RCXII	Non-powered Roof Vent - Rnd Dome		ARVE	PR	GRV	DR	LQV	GSAA	GRS	--	--
CSF	R/T Centrifugal Filtered Supply	BD	CFS	ASP	FSR	MU	--	VHBB/VSBB	RSF	--	700
CVTT	Forward curve air handler 7' to 30"	BD	--	--	DBS	--	--	VGBA	--	--	9200
CFD	Forward curve air handler 7' to 15"	DD/BD	--	DB	DBS	ZC	--	VDBA	--	--	200
CBS	Single inlet blower	BD	--	--	DBS	--	--	--	--	--	400
CBM	Direct drive dual inlet blower	DD	--	--	--	--	--	--	--	BLR	GDD
CBP	Belt drive dual inlet blower	BD	--	--	TFC	--	--	--	--	--	G
CBP-RC	Belt drive dual inlet Framed blower	BD	--	--	VFC	--	--	--	--	--	800
CBP-RE	Belt drive dual inlet framed HD blower		--	--	TFC-2	--	--	--	--	--	900
FCB	Belt drive Forward curve vent set		--	--	FCV	--	--	VFB	SFB	--	600
TD	2 speed inline mixed flow fan	DD	--	--	--	--	--	--	--	--	-
PV	Backward inclined inline fan	DD	--	--	--	--	--	--	--	FG	-
SWF	Outside wall mount exhaust	DD	--	--	--	--	--	--	--	RVF	-
PW	Radial blade pressure blower	DD	--	--	--	--	--	--	FPB	--	PW
KE	Radial blade pressure blower	DD	--	CPFD	JRW	--	--	--	IPA	--	KE
D	Forward curve direct drive blower	DD	--	--	DDF	--	--	--	SFD	--	D

R/T = Roof Top, BD = Belt Drive , DD = Direct Drive

October 2012

- E.&O.E. - All Prices F.O.B. Our Warehouse - Subject to Change Without Notice - All Taxes Extra - May not be Available at All Branches -