

## DUCTMATE PRODUCTS

www.ductmate.com

### INDEX

ADHESIVES	
LAG-IT — MULTI PURPOSE/COATING.....	11-10
PROTACK/PROTACK HV — DUCT LINER .....	11-10
CLUTCHER SYSTEM.....	11-7
CLUTCHER TOOLS.....	11-7
CONDUIT.....	11-8
DUCT	
ROUND STRAP BRACKET TYPE BA .....	11-7
SEALANTS	
EVERSEAL WATER BASED HIGH VELOCITY .....	11-9
PROSEAL AND FIBERSEAL WATER BASED .....	11-10
SOLVSEAL PREMIUM SOLVENT BASED	
HIGH VELOCITY .....	11-9
SUPER LINER SEAL — WATER BASED — DUCT	
INSULATION SURFACE.....	11-10
DUCT CONNECTOR SYSTEMS	
ACCESSORIES	
SYSTEM '25'® AND '35'®.....	11-2
SYSTEM '45'® .....	11-2
TDC AND TDF CLEATS.....	11-2
TDC AND TDF CORNERS.....	11-3
RECTANGULAR	
SYSTEM '25'® — GALVANIZED.....	11-2
SYSTEM '35'® — GALVANIZED.....	11-2
SYSTEM '45'® — GALVANIZED.....	11-2
SPIRALMATE® — ROUND	
LARGE PROFILE 40" – 60".....	11-3
SMALL PROFILE 10" – 38".....	11-3
DUCT SYSTEM ACCESSORIES	
ACCESS DOORS	
THE "SANDWICH" FOR ROUND AND	
RECTANGULAR DUCT.....	11-5
SQUARE FRAMED — GALVANIZED — DOUBLE	
CAMMED .....	11-6
ULTIMATE — BLACK IRON .....	11-6
ULTIMATE II — BLACK IRON.....	11-6
EASYROD TIE ROD .....	11-4
QUICK SLEEVE ROUND DUCT CONNECTOR	
WITH FDA GASKET .....	11-4
ISOLATION HANGER TYPE SI.....	11-7
MOISTURE DRAINS AND CAPS.....	11-8
PROGUARD — PROTECTIVE DUCT COVERING.....	11-9
RETAINING ANGLE FOR FIRE DAMPERS .....	11-11
TRAPEZE DUCT HANGER, ISOLATION PADS, AND	
TRAPEZE BEAM CLAMPS .....	11-6
TURNING VANE AND RAIL SYSTEMS	
PRORAIL (SELF-LOCKING RAIL SYSTEM) .....	11-11
VANES (DOUBLE WALL).....	11-11
WIRE ROPE.....	11-8

*Expert Service. Quality Products. Since 1960.*

**RECTANGULAR DUCT CONNECTOR SYSTEMS**
**SYSTEM '25'® — GALVANIZED**

ITEM #	MODEL	DESCRIPTION	CTN/QTY
715210	DM25	DM25 Angle 20 ft length	3,000/bndl
715212	10004	DC25 Corner with Clip (no bolt required)	250

**SYSTEM '35'® — GALVANIZED**

ITEM #	MODEL	DESCRIPTION	CTN/QTY
715200	DM35	DM35 Angle 20 ft length	3,000/bndl
715202	10001	DC111 B Corner with Clip (no bolt required)	250
715203	10002	DC35 Corners (Require 3/8" x 1" Carriage Bolt and Nut)	250



DC35

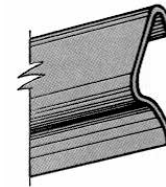
**NOTE:** System 35 is also available in other material.

**SYSTEM '45'® — GALVANIZED**

ITEM #	MODEL	DESCRIPTION	CTN/QTY
715214	10010	DM45 Angle 19 ft length — 18 GA SMACNA Class K	—
715216	10011	DC45 Plated Bolt Corners	100

**ACCESSORIES**
**SYSTEM '25'® AND '35'®**

ITEM #	MODEL	DESCRIPTION	CTN/QTY
715250	10005	6" Galvanized Cleat	500 pcs
715260	10955	#440 Butyl Gasket Tape (3/16" x 5/8" x 25 ft/roll)	500 ft
715262	10906	Neoprene Gasket Tape (5/16" x 3/4" x 50 ft/roll)	750 ft
715270	12200	Cleater I Tool	1
715272	12202	Cleater II Tool	1
715274	12206	Corner Alignment Tool	1



Metal Cleat



Cleater I and II

**SYSTEM '45'®**

ITEM #	MODEL	DESCRIPTION	CTN/QTY
715218	10012	DM45 Bolt Cleat — Plated — 10 GA	250 pcs
715266	10909	Neoprene Gasket — 5/16" x 1"	800 ft
715264	10954	440 Gasket — 3/16" x 1"	400 ft

**TDC AND TDF CLEATS**

ITEM #	MODEL	DESCRIPTION	CTN/QTY
715222	T6CGA	TDC Cleat — 6" Galvanized	500 pcs
715231	11908	TDF Cleat — 6" Galvanized	500 pcs
715230	12149	TDC Universal Cleat — 6" Galvanized (Versa Cleat)	250 pcs


 Corner Alignment  
Tool

**ACCESSORIES (cont'd)**
**TDC AND TDF CORNERS**

ITEM #	MODEL	DESCRIPTION	CTN/QTY
715224	ACGA	TDC Corner – Automatic Style – Galvanized	250
715235	CMCGA	TDC Corner – Stacked for Cornermatic – Galvanized	250
715233	CMFGA	TDF Corner – Stacked for Cornermatic – Galvanized	250
715232	FGA	TDF Corner – Galvanized	250



CMCGA

**SPIRALMATE® — ROUND DUCT CONNECTOR SYSTEM**
**SMALL PROFILE 10" – 38"**

ITEM #	MODEL	DESCRIPTION	CTN/QTY
715610	14010	10" Spiralmate Galvanized Ring	1
715612	14012	12" Spiralmate Galvanized Ring	1
715614	14014	14" Spiralmate Galvanized Ring	1
715616	14016	16" Spiralmate Galvanized Ring	1
715618	14018	18" Spiralmate Galvanized Ring	1
715620	14020	20" Spiralmate Galvanized Ring	1
715622	14022	22" Spiralmate Galvanized Ring	1
715624	14024	24" Spiralmate Galvanized Ring	1
715626	14026	26" Spiralmate Galvanized Ring	1
715628	14028	28" Spiralmate Galvanized Ring	1
715630	14030	30" Spiralmate Galvanized Ring	1
715632	14032	32" Spiralmate Galvanized Ring	1
715634	14034	34" Spiralmate Galvanized Ring	1
715636	14036	36" Spiralmate Galvanized Ring	1
715638	14038	38" Spiralmate Galvanized Ring	1



Spiralmate Round Duct Connector System

**LARGE PROFILE 40" – 60"**

ITEM #	MODEL	DESCRIPTION	CTN/QTY
715640	15040	40" Spiralmate Galvanized Ring	1
715642	15042	42" Spiralmate Galvanized Ring	1
715644	15044	44" Spiralmate Galvanized Ring	1
715646	15046	46" Spiralmate Galvanized Ring	1
715648	15048	48" Spiralmate Galvanized Ring	1
715650	15050	50" Spiralmate Galvanized Ring	1
715652	15052	52" Spiralmate Galvanized Ring	1
715654	15054	54" Spiralmate Galvanized Ring	1
715656	15056	56" Spiralmate Galvanized Ring	1
715658	15058	58" Spiralmate Galvanized Ring	1
715660	15060	60" Spiralmate Galvanized Ring	1



Closure Ring



Flange

**NOTE:** Larger diameters available upon request.

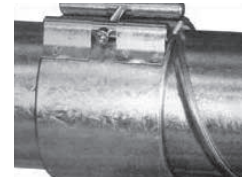
## DUCTMATE PRODUCTS

[www.ductmate.com](http://www.ductmate.com)

### DUCT SYSTEM ACCESSORIES

#### QUICK SLEEVE

The perfect, airtight connection for round or spiral duct 3" through 12". Tighten one bolt to complete the connection. Duct can be disassembled and reassembled. No end preparation necessary. No protrusions in the airstream. Ideal for ducts carrying dust, etc.



#### QUICK SLEEVE ROUND DUCT CONNECTOR — WITH FDA GASKET

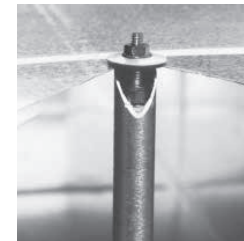
ITEM #	MODEL	DESCRIPTION
715853	QSFDA3GA	3" Quick-Sleeve – Galvanized
715854	QSFDA4GA	4" Quick-Sleeve – Galvanized
715855	QSFDA5GA	5" Quick-Sleeve – Galvanized
715856	QSFDA6GA	6" Quick-Sleeve – Galvanized
715857	QSFDA7GA	7" Quick-Sleeve – Galvanized
715858	QSFDA8GA	8" Quick-Sleeve – Galvanized
715859	QSFDA9GA	9" Quick-Sleeve – Galvanized
715860	QSFDA10GA	10" Quick-Sleeve – Galvanized
715862	QSFDA12GA	12" Quick-Sleeve – Galvanized
715864	QSFDA14GA	14" Quick-Sleeve – Galvanized



#### EASYROD TIE ROD

Easyrod is an extremely strong and quick alternative method for the installation of tie rod reinforcements into ductwork. Threaded inserts are applied to the inside of EMT conduit to insure fast and consistent installation of internal reinforcements.

ITEM #	MODEL	DESCRIPTION
715988	EZ50	EasyRod 1/2" (bolt/washer/insert for 1/2" conduit)
715989	EZ75	EasyRod 3/4" (bolt/washer/insert for 3/4" conduit)
715987	EZTOOL	Ez-Tool Magnetic Tie Rod Anchor



EasyRod Tie Rod

**NOTE:** 1/2" and 3/4" EasyRod is packaged at 250 sets/carton.



EZ-Tool

**DUCT SYSTEM ACCESSORIES (cont'd)**
**ACCESS DOORS — THE “SANDWICH” FOR ROUND AND RECTANGULAR DUCT**

- Insulated or uninsulated
- Smooth interior finish on insulated doors
- Tested to 20" W.G. with no leakage noted
- Tested to negative 10" W.G. with no leakage noted

Please specify when ordering doors for negative pressure applications. Insulated doors are recommended for negative pressure applications.


**Rectangular Duct — Insulated — Galvanized**

ITEM #	MODEL	SIZE (")
715298	DI106GA	10 × 6
715300	DI128GA	12 × 8
715302	DI1814GA	18 × 14
715304	DI2418GA	24 × 18

**Round Duct — Insulated — Galvanized**

ITEM #	MODEL	SIZE (")	ROUND DUCT SIZE (")
715358	DRI846GA	4 × 8	5– 6
715360	DRI849GA	4 × 8	7– 9
715362	DRI8411GA	4 × 8	10– 11
715364	DRI8414GA	4 × 8	12– 14
715372	DRI12811GA	8 × 12	10– 11
715374	DRI12814GA	8 × 12	12– 14
715376	DRI12816GA	8 × 12	15– 16
715378	DRI12818GA	8 × 12	17– 18
715380	DRI12820GA	8 × 12	19– 20
715390	DRI161216GA	12 × 16	15– 16
715392	DRI161218GA	12 × 16	17– 18
715394	DRI161220GA	12 × 16	19– 20
715396	DRI161222GA	12 × 16	21– 22
715398	DRI161224GA	12 × 16	23– 24
715400	DRI161228GA	12 × 16	25– 28
715402	DRI161232GA	12 × 16	29– 32
715404	DRI161236GA	12 × 16	33– 36
715430	DRI241832GA	18 × 24	29– 32
715432	DRI241836GA	18 × 24	33– 36
715434	DRI241840GA	18 × 24	37– 40
715436	DRI241844GA	18 × 24	41– 44
715438	DRI241848GA	18 × 24	45– 48
715440	DRI241852GA	18 × 24	49– 52
715442	DRI241856GA	18 × 24	53– 56
715444	DRI241862GA	18 × 24	57– 62

**NOTE:** Also available without insulation.

## DUCTMATE PRODUCTS

www.ductmate.com

### DUCT SYSTEM ACCESSORIES (cont'd)

#### ACCESS DOORS

##### ULTIMATE — BLACK IRON

ITEM #	MODEL	SIZE (")
715336	D128ULBI	12 × 8
715332	D106ULBI	10 × 6
715334	D1010ULBI	10 × 10

##### ULTIMATE II — BLACK IRON

ITEM #	MODEL	SIZE (")
715521	DW106ULBI	10 × 6
715522	DW1010ULBI	10 × 10

##### SQUARE FRAMED — GALVANIZED — DOUBLE CAMMED

Dove-tail frame with double cam latches

- Insulated only
- Meets SMACNA requirements for low pressure doors (3" w.g.)

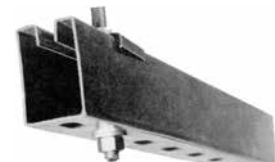
ITEM #	MODEL	SIZE (")
715508	FDC8GA	8 × 8
715509	FDC10GA	10 × 10
715510	FDC12GA	12 × 12



### TRAPEZE DUCT HANGER, ISOLATION PADS, AND TRAPEZE BEAM CLAMPS

- Hot-dipped galvanized
- Eliminates hard to cut and punch angle iron
- Ship directly to job site
- Easy to cut
- Lightweight
- Neat, professional appearance

ITEM #	MODEL	DESCRIPTION
715252	TRAP05GA	Trapeze Duct Hanger @ 20' lengths – Galvanized
715258	DM2735AS	Isolation Pad for Trapeze Hanger (100/ctn)
715254	TBCLAMP	Trapeze Beam Clamp Assembly (100/ctn)



Trapeze Duct Hanger



Isolation Pad



Beam Clamp

## DUCTMATE PRODUCTS

[www.ductmate.com](http://www.ductmate.com)

### ISOLATION HANGER TYPE SI

Rubber prevents vibrations from being transmitted from air ducts and other ventilation devices to parts of the building.

The load-bearing capacity of the hanger can be used to its full extent.

ITEM #	MODEL	DESCRIPTION	WEIGHT/LB
715256	DM2723SI	Isolation Hanger for 3/8" Threaded Rod	0.74

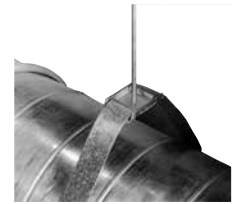


### ROUND DUCT STRAP BRACKET TYPE BA

The Round Duct Strap Bracket is a self-loading bracket for use with Ductmate Hanger Strap and standard threaded rod size 5/16" to 3/8".

The Strap Bracket is suitable for use with round duct up to 50" in diameter, as defined by SMACNA.

ITEM #	MODEL	DESCRIPTION	WEIGHT/LB
715804	DM4703BA3	Round Duct Strap Bracket (for 5/16" to 3/8" rod) – Galvanized	0.14



### CLUTCHER SYSTEM

- Can be used on a variety of mechanical systems
- Wire and clutcher sold separately
- Eliminates the need to stock pre-cut wire
- Tapered bore design for fast and easy installation
- Easily adjust hanging height by hand
- Extremely strong
- Offers a 5-to-1 safety factor
- Available in variety of sizes for different weights
- Items can be hung at angles up to 60° from vertical
- Lightweight design reduces the risk of on-site accidents
- Aesthetically pleasing



ITEM #	MODEL	DESCRIPTION
715280	12750	#10 Clutcher, 10/bag
715281	12751	#20 Clutcher, 10/bag
715282	12752	#30 Clutcher, 5/bag
715283	12753	#40 Clutcher, 5/bag



### CLUTCHER TOOLS

ITEM #	MODEL	DESCRIPTION
715278	12730	Wire Rope Cutter (HFWRC)
715276	12738	Declutcher Tool (CLTOOL1020)

## DUCTMATE PRODUCTS

www.ductmate.com

### WIRE ROPE

Ductmate Wire Rope is designed for the suspension of HVAC and other mechanical systems.

This product has been designed to be used in conjunction with Ductmate's Cablemate Systems.

- Aircraft quality zinc coated wire rope
- Superior strength
- Supplied in coils to reduce waste
- Coils were designed for strength and ease of use
- Available in a variety of sizes and lengths



#### #10 WIRE ROPE FOR #10 CLUTCHER

ITEM #	MODEL	DESCRIPTION
715286	12755	#10 Wire Rope, 500 ft/spool – 2.0 mm

#### #20 WIRE ROPE FOR #20 EZ-LOCK AND CLUTCHER

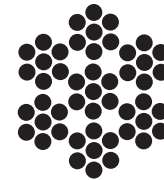
ITEM #	MODEL	DESCRIPTION
715287	12760	#20 Wire Rope, 500 ft/spool – 3.2 mm
715285	12761	#20 Wire Rope, 1,000 ft/spool – 3.2 mm

#### #30 WIRE ROPE FOR #30 CLUTCHER

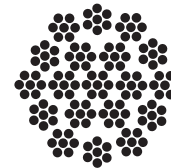
ITEM #	MODEL	DESCRIPTION
715288	12766	#30 Wire Rope, 1,000 ft/spool – 4.8 mm

#### #40 WIRE ROPE FOR #40 CLUTCHER

ITEM #	MODEL	DESCRIPTION
715289	12770	#40 Wire Rope, 500 ft/spool – 6.0 mm



Wire Rope  
7x7



Wire Rope  
7x19

### MOISTURE DRAINS AND CAPS

An economical and fast method of installing leakproof drain in ductwork and drain pans.

ITEM #	MODEL	DESCRIPTION
715904	MD75GA	Moisture Drain – 3/4"



### CONDUIT

An economical and fast method of installing leakproof drain in ductwork and drain pans.

ITEM #	MODEL	DESCRIPTION
715990	EMT	1/2" x 10 ft. Conduit



## DUCTMATE PRODUCTS

[www.ductmate.com](http://www.ductmate.com)

### PROGUARD — PROTECTIVE DUCT COVERING

PROguard Heavy Duty is a dual-ply polyethylene film with a high-tack adhesive coating. It is specially formulated to keep film attached and leave no residue when removed. Its unique manufacturing process gives PROguard Heavy Duty unmatched puncture resistance, strength, elongation, and workability.

ProGuard Standard Grade is an economical singly-ply film with a low tack adhesive coating.

#### Features:

Color:	Clear
Adhesion:	Adheres to Galvanized, Stainless Steel, Galvannealed, Aluminum, PVC Coated, Aluminized, and Black Iron
Type:	Dual Film Polyethylene
Shelf Life:	For best results use within 1 year of purchase
Elongation:	Heavy Duty Grade: 600%; Standard Grade: 550%
Break Strength:	Heavy Duty Grade: 13.1 lbs/in; Standard Grade: 12.6 lbs/in
Indoor/Outdoor:	Stands up in the rain, snow, or sun
Thickness:	2.5 mil (Dual film acts like a 4 – 4.5 mil single film)
Adhesive:	Acrylic. Does not leave sticky residue on ductwork after removal



ITEM #	MODEL	DESCRIPTION	SIZE	CTN/QTY
715942	PG24	PROguard 24" roll	24" × 200'	2 rolls/box
715944	PG36	PROguard 36" roll	36" × 200'	1 roll/box
715946	PG48	PROguard 48" roll	48" × 200'	1 roll/box
715948	PG24C	PROguard Lite 24" roll	24" × 200'	2 rolls/box
715950	PG36C	PROguard Lite 36" roll	36" × 200'	1 roll/box

### SOLVSEAL PREMIUM SOLVENT BASED HIGH VELOCITY DUCT SEALANT

SOLVseal is a premium solvent based high velocity duct sealant based on a blend of unique synthetic elastomers, select hydrocarbon resins and minerals. This blend results in a superior product that is unequaled in performance.

#### Features:

- UL Classified
- Permanently flexible
- Fast drying
- Exceptional workability
- Will not drip or sag
- High water resistance
- Low brush drag
- Excellent spreadability
- Minimal shrinkage
- Indoor or outdoor use
- Superior sealing strength
- Conforms to requirements of NFPA 90A and 90B
- Mildew resistant
- U.S.D.A. chemically acceptable

- Good up to 15" WG

ITEM #	MODEL	DESCRIPTION	CTN/QTY
715246	SOLVSEALT11	Sealant – 1/2 gal. tube	24
715244	SOLVSEAL1	Sealant – 1 gal. pail	4



### EVERSEAL WATER BASED HIGH VELOCITY DUCT SEALANT

EVERseal is a commercial or residential grade water based, smooth duct sealant. Seals metal joints against air leaks in low, medium, and high pressure duct systems.

ITEM #	MODEL	DESCRIPTION	CTN/QTY
715242	EVERSEAL1	Water Base sealant – 1-gal. pail	4



– E.&O.E. – All Prices F.O.B. Our Warehouse – Subject to Change Without Notice – All Taxes Extra – May not be Available at All Branches –

## DUCTMATE PRODUCTS

www.ductmate.com

### PROSEAL AND FIBERSEAL WATER BASED SEALANT

PROSEAL is a premium water based high velocity duct sealant.

FIBERSEAL is a premium quality, water based high velocity duct sealant, texture and reinforcement.

**Features:**

- UL 723 Classified
- UL 181B-M Listed
- Permanently flexible
- Non-Flammable
- Exceptional workability
- Will not drip or sag
- This product contributes to satisfying LEED™ EQ Credit 4.1
- Low brush drag and spreadability reduces labour cost
- Low shrinkage
- Excellent adhesion to metal
- Mild odour
- Paintable: Latex or Epoxy paint
- Indoor or outdoor use
- Superior sealing strength
- Conforms to requirements of NFPA 90A and 90B
- Mildew resistant
- Good up to 15" WG
- No VOC's



ITEM #	MODEL	DESCRIPTION	CTN/QTY
715248	PROSEAL T	Sealant – 10.5 oz. tube	25
715249	PROSEAL 1	Sealant – 1-gal. pail	4

### PROTACK/PROTACK HV — DUCT LINER ADHESIVE

PROTack is a premium quality, fire retardant, water based duct liner adhesive.

**Features:**

- Fast tack
- Fungicides and antimicrobial agents to prevent mold growth
- Wipes clean with water
- UL Classified
- Excellent wet-tack
- Non-Flammable
- Non cob-webbing
- This product contributes to satisfying LEED™ EQ Credit 4.1



ITEM #	MODEL	DESCRIPTION	CTN/QTY
715236	PROTACK-5	Adhesive – 5 gal. pail	1
715238	PROTACK-54	Adhesive – 54 gal. drum	1

### SUPER LINER SEAL — WATER BASED — DUCT INSULATION SURFACE SEALANT

Super Liner Seal quickly and efficiently seals the surface of duct insulation, virtually eliminating the problem of airborne fibers.

**Features:**

- Flame resistant
- Moisture resistant
- Exceptional coverage
- Good dry time
- Water based
- Durable finish
- This product contributes to satisfying LEED™ EQ Credit 4.1



ITEM #	MODEL	DESCRIPTION	COLOR	CTN/QTY
715247	SLS5	Sealant – 5 gal. pail	Black – Dry Gray – Liquid	1

### LAG-IT — MULTI PURPOSE ADHESIVE/COATING

LAG-IT is a heavy-duty water based adhesive/coating available in both black and white.

LAG-IT is used for encapsulating fibers exposed on edges or tears of duct liner. It can also be used to bond open-cell duct liner (fiberglass, polyester) and rigid duct board to metal. LAG-IT can also be used to bond and seal jackets of canvas, cloth or other fabrics/insulators to air-conditioning ducts and cold water pipes.

ITEM #	MODEL	DESCRIPTION	COLOR	CTN/QTY
715240	LAGIT1B	Adhesive – 1 gal. pail	Black	4

– E.&O.E. – All Prices F.O.B. Our Warehouse – Subject to Change Without Notice – All Taxes Extra – May not be Available at All Branches –

## TURNING VANE AND RAIL SYSTEMS

### PRORAIL (SELF-LOCKING RAIL SYSTEM)

- Available for 2" and 4" Turning Vanes
- Available in specialty metals
- Insures precise vane alignment
- Assembly is quick and easy
- Fabricated with precision equipment
- Consistent product quality

ITEM #	MODEL	DESCRIPTION	BNDL/QTY
715922	4PRGA24	4" x 10' – 24 GA PROrail	100

**NOTE:** Assembly is ready to be inserted into the duct.  
Fasten to duct wall per the SMACNA recommendations.

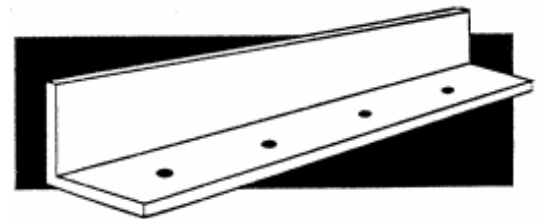


### VANES (DOUBLE WALL)

ITEM #	MODEL	DESCRIPTION	BNDL/QTY
715920	4VGA24	4" x 10' – 24 GA Double Vanes	100

## RETAINING ANGLE FOR FIRE DAMPERS

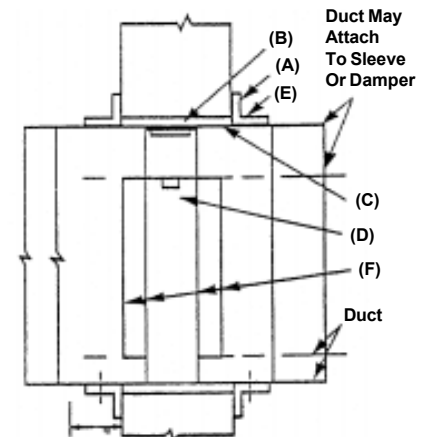
- 1-1/2 x 1-1/2 x 16 GA and 1-1/2 x 1-1/2 x 14 GA
- Pre-punched 7/32 holes for faster fastening of angle to sleeve
- 20 foot lengths minimize scrap (25 lengths per bundle)
- SMACNA E class rigidity (may be used for duct reinforcement)
- Other angle sizes and materials available
- Meets ASHRAE, SMACNA and UMC Standards



\*Hole spacing is 3" on centre

### Typical Installation Details

- |  |  |
|--|--|
| <p>(A) Retaining Angles:<br/>Minimum 1-1/2 x 1-1.2 x 0/058 (16 GA) Retaining angles must lap structural opening 1" minimum and cover corners of openings.</p> <p>(B) Clearance: 1/8 Per Linear Foot both dimensions.</p> <p>(C) Steel Sleeve</p> <p>(D) Approved Fire Damper (curtain or blade type)</p> | <p>(E) Secure Retaining Angle to Sleeve Only on 8" Centers with:</p> <ol style="list-style-type: none"> <li>1. 1/2 long welds or</li> <li>2. 1/4 Bolts and Nuts, or</li> <li>3. No. 10 Screws, or</li> <li>4. Minimum 3/16 Steel Rivets</li> </ol> <p>(F) Secure Damper to Sleeve On 8" Centers with:</p> <ol style="list-style-type: none"> <li>1. 1/2 Long Welds, or</li> <li>2. 1/4 Bolts and Nuts, or</li> <li>3. No. 10 Steel Screws, or</li> <li>4. Minimum 1/16 Steel Rivets</li> </ol> |
|--|--|



ITEM #	MODEL	DESCRIPTION
715912	12026	Angle Iron – 1-1/2 x 1-1/2 x 16 GA Galvanized w/Holes – 1 leg