

KRUEGER COMMERCIAL GRILLES, REGISTERS AND DIFFUSERS

www.krueger-hvac.com

INDEX

CEILING ADAPTER FRAMES	
ALUMINUM	9-7
STEEL	9-7
DAMPERS	
PRD10.....	9-3
PRN100.....	9-3
RP12 — ROUND BUTTERFLY DAMPER.....	9-3
DIFFUSERS — CEILING	
1450 SERIES — STEEL — SQUARE	9-2
PLQ — STEEL — SQUARE PLAQUE — ROUND NECK	9-2
RM1 — STEEL — ROUND — 3 CONES	9-2
EGG CRATES	9-6
GRILLES	
LINEAR BAR (WALL OR CEILING) — ALUMINUM.....	9-6
RETURN — EGG CRATE	
STEEL FRAME	9-5
ALUMINUM FRAME — SCREW MOUNT	9-6
SUPPLY — STEEL	
DOUBLE DEFLECTION WITH DAMPER — 3/4" BLADE SPACING	9-4
FIXED BLADES AT 0 OR 35° DEFLECTION — 3/4" BLADE SPACING.....	9-5
TRANSFER	
DOOR/SIDEWALL — ALUMINUM.....	9-7

For Technical Information visit www.krueger-hvac.com

May not be available at all branches.

Expert Service. Quality Products. Since 1960.

DIFFUSERS — CEILING

RM1 — STEEL — ROUND — 3 CONES

- Horizontal only
- 2 position adjustments
At position one, capacity is maximized. In position two, room air induction is increased.
- 360° discharge air pattern
- Designed for heating and cooling applications
- Excellent performance in variable air volume systems
- Designed for exposed duct or hard ceiling applications
- Standard finish is #44 British White
- Optional finishes available

ITEM #	MODEL	SIZE (")
717060	RM1	6
717062	RM1	8
717064	RM1	10
717066	RM1	12
717068	RM1	14



RM1

1450 SERIES — STEEL — SQUARE

- Three cones for optimum airflow control
- Great choice for variable air volume spaces
- Cones feature a one-piece stamped construction without mitered joints
- Round neck for easy connection to round duct
- Anti-smudge design prevents smeared ceilings
- Two earthquake tabs are standard

ITEM #	MODEL	SIZE (")	PANEL SIZES (")
717080	1450	6	24 × 24
717081	1450	8	24 × 24
717082	1450	10	24 × 24
717083	1450	12	24 × 24



1450

PLQ — STEEL — SQUARE PLAQUE — ROUND NECK

- One-piece, non-folded, square face plate
- Plaque attaches to a one-piece, stamped backpan by hooks
- Various frame styles available
- Round Inlet Sizes: 6", 7", and 8" (for 12" × 12" panel size)
Round Inlet Sizes: 6", 8", 10", 12", 14", and 15" (for 24" × 24" panel size)
- Standard finish is #44 British White
- Optional finishes available

ITEM #	MODEL	SIZE (")	PANEL SIZES (")
717306	PLQ	6	24 × 24
717320	PLQ	6	12 × 12
717308	PLQ	8	24 × 24
717322	PLQ	8	12 × 12
717310	PLQ	10	24 × 24
717312	PLQ	12	24 × 24
717314	PLQ	14	24 × 24



PLQ

– E.&O.E. – All Prices F.O.B. Our Warehouse – Subject to Change Without Notice – All Taxes Extra – May not be Available at All Branches –

DAMPERS

PRN100

- Neck mounted
- Gang operated radial blades that slide at right angles to the duct to allow damper to work effectively in flexible duct applications
- Operated by flat-head screwdriver through face
- Heavy gauge steel construction
- Shipped loose for field installation
- Standard finish is Mill

ITEM #	MODEL	DESCRIPTION	SIZE (")
717326	PRN100	Radial Sliding Blade Damper	6
717328	PRN100	Radial Sliding Blade Damper	8
717330	PRN100	Radial Sliding Blade Damper	10
717332	PRN100	Radial Sliding Blade Damper	12
717334	PRN100	Radial Sliding Blade Damper	14



PRN1

PRD10

- Used for round duct applications
- Gang operated blades distribute air evenly
 - 3 sets of blades for sizes 6" to 12"
 - 4 sets of blades for sizes 14" to 20"
 - 6 sets of blades for sizes 24", 30", and 36"
- Adjustable by flat-head screwdriver at the operator slot
- Shipped loose for field installation
- Standard finish is Mill (sizes 6"-12") or Black (sizes 14"-36")

ITEM #	MODEL	DESCRIPTION	SIZE (")
717336	PRD10	Radial Opposed Blade Damper	6
717338	PRD10	Radial Opposed Blade Damper	8
717339	PRD10	Radial Opposed Blade Damper	10
717340	PRD10	Radial Opposed Blade Damper	12
717341	PRD10	Radial Opposed Blade Damper	14

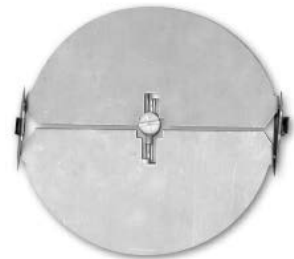


PRD10

RP12 — ROUND BUTTERFLY DAMPER

- Steel construction
- Mounted directly to round neck diffuser
- Operated by flat-head screwdriver through face
- Shipped loose for field installation
- Standard finish is Mill

ITEM #	MODEL	DESCRIPTION	SIZE (")
717360	RP12	Round Butterfly Damper	6
717361	RP12	Round Butterfly Damper	8
717362	RP12	Round Butterfly Damper	10
717363	RP12	Round Butterfly Damper	12
717364	RP12	Round Butterfly Damper	14



PRD10

KRUEGER COMMERCIAL GRILLES, REGISTERS AND DIFFUSERS

www.krueger-hvac.com

SUPPLY GRILLES — STEEL

DOUBLE DEFLECTION WITH DAMPER — 3/4" BLADE SPACING

- Vertical (V) front blades
- Fully adjustable blades
- Steel Opposed Blade Damper (Model OBD)
- Standard finish is #44 British White



880



OBD

ITEM #	MODEL	SIZE (")
717209	880VOBD	6 × 4
717210	880VOBD	6 × 6
717211	880VOBD	8 × 4
717212	880VOBD	8 × 6
717213	880VOBD	8 × 8
717214	880VOBD	10 × 4
717215	880VOBD	10 × 6
717216	880VOBD	10 × 8
717217	880VOBD	10 × 10
717218	880VOBD	12 × 4
717219	880VOBD	12 × 6
717220	880VOBD	12 × 8
717221	880VOBD	12 × 10
717222	880VOBD	12 × 12
717223	880VOBD	14 × 4
717224	880VOBD	14 × 6
717225	880VOBD	14 × 8
717226	880VOBD	14 × 10
717228	880VOBD	14 × 12
717229	880VOBD	16 × 4
717227	880VOBD	14 × 14
717230	880VOBD	16 × 6
717231	880VOBD	16 × 8
717232	880VOBD	16 × 10
717233	880VOBD	16 × 12
717234	880VOBD	16 × 14
717235	880VOBD	16 × 16
717237	880VOBD	18 × 6

ITEM #	MODEL	SIZE (")
717238	880VOBD	18 × 8
717239	880VOBD	18 × 10
717240	880VOBD	18 × 12
717241	880VOBD	18 × 14
717242	880VOBD	18 × 16
717243	880VOBD	18 × 18
717245	880VOBD	20 × 6
717246	880VOBD	20 × 8
717247	880VOBD	20 × 10
717248	880VOBD	20 × 12
717249	880VOBD	20 × 14
717250	880VOBD	20 × 16
717251	880VOBD	20 × 18
717252	880VOBD	20 × 20
717254	880VOBD	24 × 6
717255	880VOBD	24 × 8
717256	880VOBD	24 × 10
717257	880VOBD	24 × 12
717258	880VOBD	24 × 14
717260	880VOBD	24 × 18

– E.&O.E. – All Prices F.O.B. Our Warehouse – Subject to Change Without Notice – All Taxes Extra – May not be Available at All Branches –

KRUEGER COMMERCIAL GRILLES, REGISTERS AND DIFFUSERS

www.krueger-hvac.com

SUPPLY GRILLES — STEEL (cont'd)

FIXED BLADES AT 0 OR 35° DEFLECTION — 3/4" BLADE SPACING

- Horizontal (H) front blades
- Standard finish is #44 British White



ITEM #	MODEL	SIZE (")
717500	S80H	6 × 6
717501	S80H	8 × 4
717502	S80H	8 × 6
717503	S80H	8 × 8
717504	S80H	10 × 4
717505	S80H	10 × 6
717506	S80H	10 × 8
717507	S80H	10 × 10
717508	S80H	12 × 4
717509	S80H	12 × 6
717510	S80H	12 × 8
717511	S80H	12 × 10
717512	S80H	12 × 12
717513	S80H	14 × 4
717514	S80H	14 × 6
717515	S80H	14 × 8
717516	S80H	14 × 10
717517	S80H	14 × 12
717518	S80H	14 × 14
717520	S80H	16 × 6
717521	S80H	16 × 8
717522	S80H	16 × 10
717523	S80H	16 × 12
717524	S80H	16 × 14
717525	S80H	16 × 16
717527	S80H	18 × 6
717528	S80H	18 × 8
717529	S80H	18 × 10
717530	S80H	18 × 12
717531	S80H	18 × 14

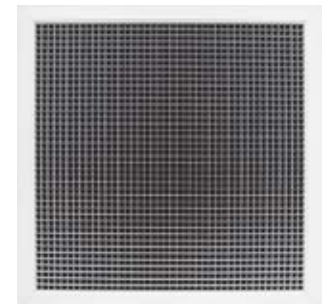
ITEM #	MODEL	SIZE (")
717532	S80H	18 × 16
717533	S80H	18 × 18
717535	S80H	20 × 6
717536	S80H	20 × 8
717537	S80H	20 × 10
717538	S80H	20 × 12
717539	S80H	20 × 14
717540	S80H	20 × 16
717541	S80H	20 × 18
717542	S80H	20 × 20
717544	S80H	22 × 22
717545	S80H	24 × 6
717546	S80H	24 × 8
717548	S80H	24 × 10
717557	S80H	24 × 12
717558	S80H	24 × 14
717559	S80H	24 × 16
717560	S80H	24 × 18
717561	S80H	24 × 20
717562	S80H	24 × 22
717563	S80H	24 × 24
717565	S80H	30 × 8
717568	S80H	30 × 12
717574	S80H	30 × 18
717580	S80H	30 × 24

RETURN GRILLES — EGG CRATE

- Aluminum core construction – 1/2" × 1/2" × 1/2"
- Aluminum or Steel frame construction
- Standard finish is #44 British White

STEEL FRAME

ITEM #	MODEL	SIZE (")
717840	EGC5-ST	6 × 6
717841	EGC5-ST	8 × 8
717842	EGC5-ST	10 × 10
717843	EGC5-ST	12 × 12
717844	EGC5-ST	14 × 14
717845	EGC5-ST	16 × 16
717846	EGC5-ST	18 × 18
717847	EGC5-ST	20 × 20
717849	EGC5-ST	24 × 24



– E.&O.E. – All Prices F.O.B. Our Warehouse – Subject to Change Without Notice – All Taxes Extra – May not be Available at All Branches –

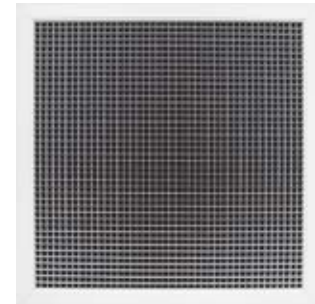
KRUEGER COMMERCIAL GRILLES, REGISTERS AND DIFFUSERS

www.krueger-hvac.com

RETURN GRILLES — EGG CRATE (cont'd)

ALUMINUM FRAME — SCREW MOUNT

ITEM #	MODEL	SIZE (")
717860	EGC5-AL	6 × 6
717861	EGC5-AL	8 × 4
717862	EGC5-AL	8 × 6
717864	EGC5-AL	8 × 8
717866	EGC5-AL	10 × 4
717867	EGC5-AL	10 × 6
717868	EGC5-AL	10 × 8
717870	EGC5-AL	10 × 10
717872	EGC5-AL	12 × 6
717874	EGC5-AL	12 × 8
717875	EGC5-AL	12 × 10
717876	EGC5-AL	12 × 12
717878	EGC5-AL	14 × 6
717880	EGC5-AL	14 × 8
717882	EGC5-AL	14 × 10
717884	EGC5-AL	14 × 14
717886	EGC5-AL	16 × 8
717888	EGC5-AL	16 × 10
717890	EGC5-AL	16 × 12
717891	EGC5-AL	16 × 14
717892	EGC5-AL	16 × 16
717893	EGC5-AL	18 × 12
717897	EGC5-AL	18 × 18
717895	EGC5-AL	20 × 10



ITEM #	MODEL	SIZE (")
717916	EGC5-AL	20 × 12
717894	EGC5-AL	20 × 20
717903	EGC5-AL	22 × 4
717910	EGC5-AL	22 × 6
717901	EGC5-AL	22 × 10
717912	EGC5-AL	22 × 12
717896	EGC5-AL	22 × 22
717898	EGC5-AL	24 × 8
717899	EGC5-AL	24 × 10
717900	EGC5-AL	24 × 12
717902	EGC5-AL	24 × 14
717904	EGC5-AL	24 × 16
717906	EGC5-AL	24 × 18
717908	EGC5-AL	24 × 20
717920	EGC5-AL	24 × 24
717930	EGC5-AL	30 × 8

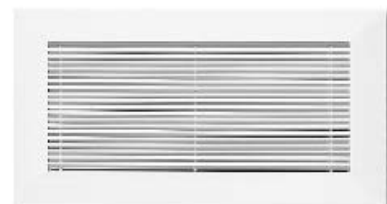
EGG CRATES

ITEM #	DESCRIPTION	SIZE (")
703142	White Aluminum Core	24 × 48 × 1/2
703150	Styrene Plastic	24 × 48 × 3/8

LINEAR BAR GRILLES (WALL OR CEILING) — ALUMINUM

- Grilles can be used on supply or return portions of heating, cooling or ventilation systems
- Available with:
 - 0° or 15° blade deflection
 - 1/4" (N) bar spacing* or 1/2" (E) bar spacing
- 1/8" blade thickness
- Extruded aluminum construction
- Section lengths range from 6" to 72" long; units longer than 72" will consist of sections butted together.
- Widths range from 2" to 24"
- Standard finish is #44 British White

ITEM #	MODEL	SIZE (")
C717001	1600	10 × 4
717942	1600E	10 × 4



* Concealed mounting not available with damper and/or normal 1/4" bar spacing.

– E.&O.E. – All Prices F.O.B. Our Warehouse – Subject to Change Without Notice – All Taxes Extra – May not be Available at All Branches –

CEILING ADAPTER FRAMES

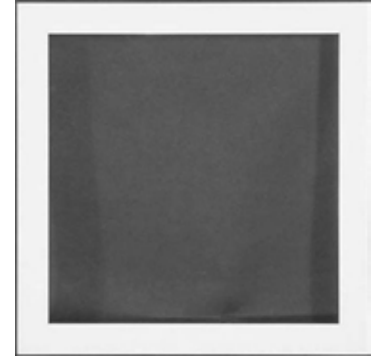
- Hard Ceiling Frame (adapts Lay-In to Surface Mount)
- Aluminum construction or Steel construction
- Standard finish is #44 British White

STEEL

ITEM #	MODEL	SIZE (")
717346	HCF23	12 × 12
717350	HCF23	24 × 24

ALUMINUM

ITEM #	MODEL	SIZE (")
717351	5HCF23	12 × 12
717356	5HCF23	24 × 24



TRANSFER GRILLES (DOOR/SIDEWALL) — ALUMINUM

- Aluminum, sight-proof grille with 1-1/2" aluminum frame on both sides which adjusts to fit door thicknesses between 1-3/8" and 2-1/4"
- Standard finish is #44 British White

ITEM #	MODEL	SIZE (")
717104	5600A	10 × 6
717106	5600A	10 × 8
717110	5600A	12 × 6
717112	5600A	12 × 8
717114	5600A	12 × 12
717116	5600A	14 × 8
717118	5600A	14 × 12
717120	5600A	16 × 8
717122	5600A	16 × 12
717130	5600A	18 × 12
717136	5600A	18 × 18
717138	5600A	20 × 20
717139	5600A	24 × 12
717134	5600A	24 × 24



Please contact your local ECCO Supply™ Sales Representative for pricing and information on:

- Architectural Ceiling Diffusers
- Clean Room Application Products
- Diffusers not shown in price list
- Engineering Data
- Grilles/Registers not shown in price list
- Industrial Application Products
- Linear Diffusers
- Security Grilles
- Stainless Steel Grilles/Registers
- Terminal Units and Accessories