

ALLIED COMMERCIAL UNIT HEATERS

www.allied-commercial.com

INDEX

ACCESSORIES	
CONVERSION KITS — FIELD INSTALLED — LPG.....	2-4
HORIZONTAL VENTING	
90° ELBOW.....	2-5
HORIZONTAL VENT KITS — DOWNSLOPE.....	2-5
HORIZONTAL VENT KITS — UPSLOPE.....	2-5
STRAIGHT VENT PIPE	2-5
LF24	
COMPACT — LOW PROFILE — HORIZONTAL.....	2-2
STANDARD — HORIZONTAL.....	2-3 – 2-4

For Technical and Warranty Information see www.allied-commercial.com

Expert Service. Quality Products. Since 1960.

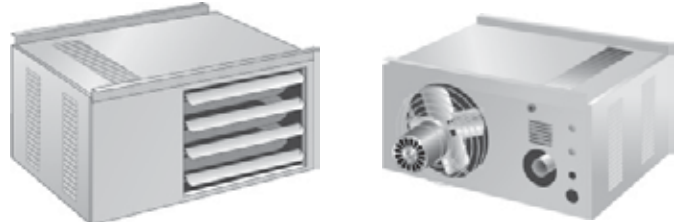
ALLIED COMMERCIAL UNIT HEATERS

www.allied-commercial.com

LF24 — COMPACT — LOW PROFILE — HORIZONTAL

Features

- Horizontal unit heaters are low profile, compact in design and easy to install.
- Steady State Efficiencies of up to 81%.
- Input – 30,000 to 75,000 Btuh
- Ideal for economical heating systems in garages and non-confined living spaces.
- Shipped completely assembled with controls factory installed and wired.
- Hanging brackets are shipped loose for field installation.
- Each unit factory tested to ensure proper operation and dependability.
- Installer has only to locate unit, make unit gas supply, electrical connections and mount thermostat to complete the installation.



Approvals

- Unit certified by CSA International.
- Units are certified for natural or LPG/propane gas (optional kit required for LPG/ propane conversion).
- Units are approved for vertical or horizontal venting.

Heating System

- 24 volt redundant combination gas control valve combines a manual main shutoff valve, pressure regulation and automatic electric valve (dual) into one compact combination control.

- Solid-state electronic direct spark ignition control provides positive main burner ignition.
- Spark is intermittent and occurs only when required.
- Separate electronic flame sensor control assures safe and reliable operation.
- Should loss of flame occur, flame sensor controls will initiate 3 attempts at re-ignition before locking out unit operation.
- Combustion air inducer prepurges heat exchanger and safely vents flue products.
- Pressure switch proves inducer operation before allowing gas valve to open.
- Combustion air inducer operates only during heating cycle.

Model Number Identification

	LF	24	-	45	A	-	P
LF = Unit Type Unit Heater							
Series							
Nominal Gas Heat Input 30 = 30,000 Btuh 45 = 45,000 Btuh 60 = 60,000 Btuh 75 = 75,000 Btuh							
							Gas Type (blank) = Natural Gas P = LPG/Propane Gas
							Heat Exchanger Type A = Aluminized Steel

ITEM #	MODEL	BTU/HR	WEIGHT/LBS
891821	LF24-30A	30,000	60
891823	LF24-45A	45,000	63
891825	LF24-60A	60,000	87
891827	LF24-75A	75,000	91

NOTE: For ECCO Type B Gas Vent see front section of our catalogue.
For Technical Data see www.allied-commercial.

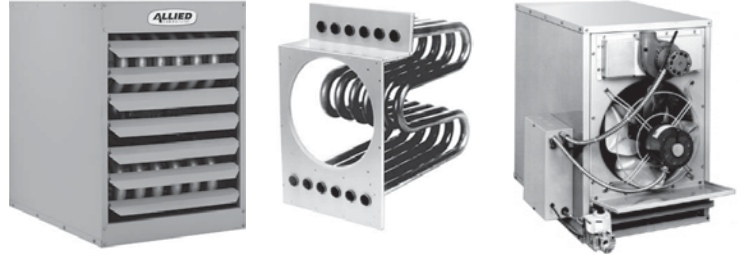
ALLIED COMMERCIAL UNIT HEATERS

www.allied-commercial.com

LF24 — STANDARD — HORIZONTAL

Features

- Horizontal unit heaters are compact in design and easy to install.
- Steady State Efficiencies of up to 80.5%.
- Input – 115,000 to 390,000 Btuh
- Ideal for economical commercial heating systems.
- Shipped completely assembled with controls factory installed and wired.
- Each unit is test operated at the factory to ensure proper operation and dependability.
- Installer has only to locate unit, make unit gas supply, electrical connections and mount thermostat to complete the installation.
- Units may be vented horizontally or vertically.



Approvals

- Unit certified by CSA International.
- Units are certified for natural or LPG/Propane gas
- ISO 9001 Registered Manufacturing Quality System

Heating System

- 24 volt redundant combination gas control valve combines a manual main shutoff valve, pressure regulation and automatic electric valve (dual) into one compact combination control.
- Solid-state electronic direct spark ignition control provides positive main burner ignition.
- Spark is intermittent and occurs only when required.

- Separate electronic flame sensor control assures safe and reliable operation.
- Should loss of flame occur, flame sensor controls will initiate 3 attempts at re-ignition before locking out unit operation.
- Combustion air inducer prepurges heat exchanger and safely vents flue products.
- Pressure switch proves inducer operation before allowing gas valve to open.
- Combustion air inducer operates only during heating cycle.

Model Number Identification

LF	24	-	200	A
LF = Unit Type	Unit Heater Series			Heat Exchanger Type A = Aluminized Steel S = Stainless Steel
				Nominal Gas Heat
		100 = 100,000 Btuh		230 = 230,000 Btuh
		115 = 115,000 Btuh		250 = 250,000 Btuh
		145 = 145,000 Btuh		300 = 300,000 Btuh
		175 = 175,000 Btuh		345 = 345,000 Btuh
		200 = 200,000 Btuh		400 = 290,000 Btuh

(cont'd on next page)

ALLIED COMMERCIAL UNIT HEATERS

www.allied-commercial.com

LF24 — STANDARD — HORIZONTAL (cont'd)

ALUMINIZED

ITEM #	MODEL	BTU/HR	WEIGHT/LBS
891828	LF24-100A	115,000	140
891829	LF24-115A	115,000	140
891831	LF24-145A	145,000	150
891833	LF24-175A	172,500	165
891835	LF24-200A	195,000	165
891837	LF24-230A	230,000	270
891839	LF24-250A	250,000	285
891841	LF24-300A	300,000	305
891843	LF24-345A	345,000	310
891845	LF24-400A	390,000	310

STAINLESS STEEL

ITEM #	MODEL	BTU/HR	WEIGHT/LBS
891847	LF24-115S	115,000	140
891849	LF24-145S	145,000	150
891851	LF24-175S	172,500	165
891853	LF24-200S	195,000	165
891857	LF24-250S	250,000	285
891859	LF24-300S	300,000	305
891863	LF24-400S	390,000	310

NOTE: For ECCO Type B Gas Vent see front section of our catalogue.
For Technical Data see www.allied-commercial.com

ACCESSORIES — FIELD INSTALLED

CONVERSION KITS — LPG

LPG/Propane Kit is required for field change over from natural gas.

ITEM #	MODEL	DESCRIPTION
891910	20L05	For -30, -45, -60 & -75 models
891970	63J56	For -115 through -175 models
891912	20L07	For -200 models

ALLIED COMMERCIAL UNIT HEATERS

www.allied-commercial.com

HORIZONTAL VENTING

HORIZONTAL VENT KITS — UPSLOPE

ITEM #	MODEL	DESCRIPTION
891704	C5VENT4KU-75W63	4" – LF24-60-75-100-115-145
891706	C5VENT5KU-75W64	5" – LF24-175-200-230-250-300

HORIZONTAL VENT KITS — DOWNSLOPE

ITEM #	MODEL	DESCRIPTION
891712	C5VENT4KD-75W67	4" – LF24-60-75-100-115-145
891714	C5VENT5KD-75W68	5" – LF24-175-200-230-250-300

90° ELBOW

ITEM #	MODEL	DESCRIPTION
891720	C5VENT4E-75W71	4" – LF24-60-75-100-115-145 (optional)
891722	C5VENT5E-75W72	5" – LF24-175-200-230-250-300 (required)

STRAIGHT VENT PIPE FOR HORIZONTAL VENTING

ITEM #	MODEL	DESCRIPTION
891732	C5VENT4P6-75W77	4" × 6" – LF24-60-75-100-115-145
891734	C5VENT4P12-75W78	4" × 12" – LF24-60-75-100-115-145
891736	C5VENT4P36-75W79	4" × 36" – LF24-60-75-100-115-145
891738	C5VENT5P6-75W80	5" × 6" – LF24-175-200-230-250-300
891740	C5VENT5P12-75W81	5" × 12" – LF24-175-200-230-250-300
891742	C5VENT5P36-75W82	5" × 36" – LF24-175-200-230-250-300